

Product Datasheet

ERBB2 Antibody (orb1239829)

Description

ERBB2 Antibody

Species/Host

Gallus

Reactivity

Human, Mouse, Rat

Conjugation

Unconjugated

Tested

ELISA, IF, IHC-P, IP, WB

Applications

Immunogen

erbB-2 antibody was raised against a 19 amino acid synthetic peptide near the carboxy terminus of human erbB-2. The immunogen is located within the last 50 amino acids of erbB-2.

Target

ERBB2

Preservatives

erbB-2 Antibody is supplied in PBS containing 0.02% sodium azide.

Form/Appearance

Liquid

Concentration

1 mg/mL

Storage

erbB-2 antibody can be stored at 4°C for three months and -20°C, stable for up to one year. As with all antibodies care should be taken to avoid repeated freeze thaw cycles. Antibodies should not be exposed to prolonged high temperatures.

Note

For research use only

Application notes

erbB-2 antibody can be used for detection of erbB-2 by Western blot at 1 - 2 µg/mL. Antibody can also be used for immunohistochemistry starting at 2.5 µg/mL. For immunofluorescence start at 20 µg/mL. Antibody validated: Western Blot in rat samples; Immunohistochemistry in human samples and Immunofluorescence in human samples. All other applications and species not yet tested.

Isotype

IgY

Clonality

Polyclonal

Uniprot ID

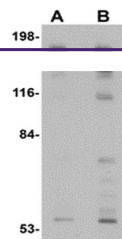
[P04626](#)

NCBI

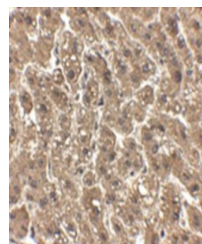
[NP_004439](#)

Dilution Range

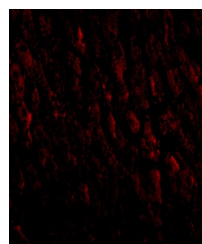
erbB-2 antibody can be used for detection of erbB-2 by Western blot at 1 - 2 µg/mL. Antibody can also be used for immunohistochemistry starting at 2.5 µg/mL. For immunofluorescence start at 20 µg/mL. Antibody validated: Western Blot in rat samples; Immunohistochemistry in human samples



Western blot analysis of erbB-2 in rat l...



Immunohistochemistry of erbB-2 in human ...



Immunofluorescence of ERBB2 in human liv...