

Product Datasheet

ESRRB Antibody (orb1239825)

Description
ESRRB Antibody
Species/Host

Rabbit

Reactivity

Human

Conjugation

Unconjugated

Tested

ELISA, IF, IHC-P, WB

Applications
Immunogen

ESRRB antibody was raised against a 19 amino acid synthetic peptide near the carboxy terminus of human ESRRB. The immunogen is located within amino acids 360 - 410 of ESRRB.

Target

ESRRB

Preservatives

ESRRB Antibody is supplied in PBS containing 0.02% sodium azide.

Form/Appearance

Liquid

Concentration

1 mg/mL

Storage

ESRRB antibody can be stored at 4°C for three months and -20°C, stable for up to one year. As with all antibodies care should be taken to avoid repeated freeze thaw cycles. Antibodies should not be exposed to prolonged high temperatures.

Note

For research use only

Application notes

ESRRB antibody can be used for detection of ESRRB by Western blot at 1 µg/mL. Antibody can also be used for immunohistochemistry starting at 5 µg/mL. For immunofluorescence start at 5 µg/mL. Antibody validated: Western Blot in human samples; Immunohistochemistry in human samples and Immunofluorescence in human samples. All other applications and species not yet tested.

Isotype

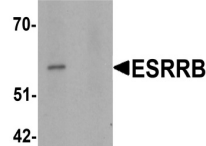
IgG

Clonality

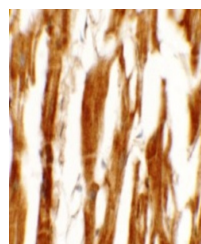
Polyclonal

Uniprot ID
O95718
NCBI
NP_004443
Dilution Range

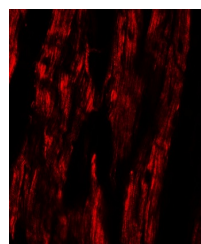
ESRRB antibody can be used for detection of ESRRB by Western blot at 1 µg/mL. Antibody can also be used for immunohistochemistry starting at 5 µg/mL. For immunofluorescence start at 5 µg/mL. Antibody validated: Western Blot in human samples; Immunohistochemistry in human samples and

A B


Western blot analysis of ESRRB in human ...



Immunohistochemistry of ESRRB in human h...



Immunofluorescence of ESRRB in human hea...