

Product Datasheet

TMC6 Antibody (orb1239823)

Description

TMC6 Antibody

Species/Host

Rabbit

Reactivity

Human, Mouse, Rat

Conjugation

Unconjugated

Tested

ELISA, IHC-P, WB

Applications
Immunogen

EVER1 antibody was raised against a 14 amino acid synthetic peptide from near the amino terminus of human EVER1. The immunogen is located within the first 50 amino acids of EVER1.

Target

TMC6

Preservatives

EVER1 Antibody is supplied in PBS containing 0.02% sodium azide.

Form/Appearance

Liquid

Concentration

1 mg/mL

Storage

EVER1 antibody can be stored at 4°C for three months and -20°C, stable for up to one year. As with all antibodies care should be taken to avoid repeated freeze thaw cycles. Antibodies should not be exposed to prolonged high temperatures.

Note

For research use only

Application notes

EVER1 antibody can be used for the detection of EVER1 by Western blot at 1 - 2 µg/mL. Antibody can also be used for immunohistochemistry starting at 2.5 µg/mL. Antibody validated: Western Blot in mouse samples and Immunohistochemistry in human samples. All other applications and species not yet tested.

Isotype

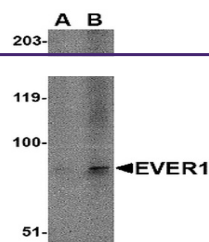
IgG

Clonality

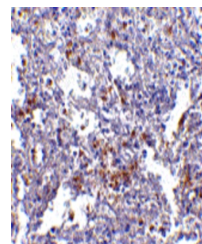
Polyclonal

Uniprot ID
Q7Z403
NCBI
AAM44452
Dilution Range

EVER1 antibody can be used for the detection of EVER1 by Western blot at 1 - 2 µg/mL. Antibody can also be used for immunohistochemistry starting at 2.5 µg/mL. Antibody validated: Western Blot in mouse samples and Immunohistochemistry in human samples. All other applications and species not yet tested.



Western blot analysis of EVER1 in A-20 c...



Immunohistochemistry of EVER1 in human s...