

## Product Datasheet

### TMC6 Antibody (orb1239822)

## Description

TMC6 Antibody

### Species/Host

Rabbit

### Reactivity

Human, Mouse

### Conjugation

Unconjugated

### Tested

ELISA, IF, IHC-P, WB

### Applications

### Immunogen

EVER1 antibody was raised against a 15 amino acid synthetic peptide from near the center of human EVER1. The immunogen is located within amino acids 560 - 610 of EVER1.

### Target

TMC6

### Preservatives

EVER1 Antibody is supplied in PBS containing 0.02% sodium azide.

### Form/Appearance

Liquid

### Concentration

1 mg/mL

### Storage

EVER1 antibody can be stored at 4°C for three months and -20°C, stable for up to one year. As with all antibodies care should be taken to avoid repeated freeze thaw cycles. Antibodies should not be exposed to prolonged high temperatures.

### Note

For research use only

### Application notes

EVER1 antibody can be used for the detection of EVER1 by Western blot at 1 - 2 µg/mL. Antibody can also be used for immunohistochemistry starting at 2.5 µg/mL. For immunofluorescence start at 20 µg/mL. Antibody validated: Western Blot in human samples; Immunohistochemistry in human samples and Immunofluorescence in human samples. All other applications and species not yet tested.

### Isotype

IgG

### Clonality

Polyclonal

### Uniprot ID

[Q7Z403](#)

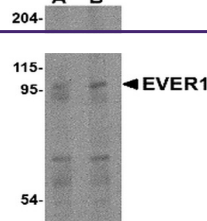
### NCBI

[AAM44452](#)

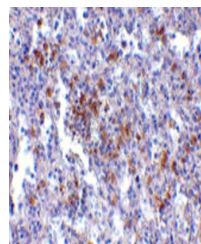
### Dilution Range

EVER1 antibody can be used for the detection of EVER1 by Western blot at 1 - 2 µg/mL. Antibody can also be used for immunohistochemistry starting at 2.5 µg/mL. For immunofluorescence start at 20 µg/mL. Antibody validated: Western Blot in human samples; Immunohistochemistry in human samples

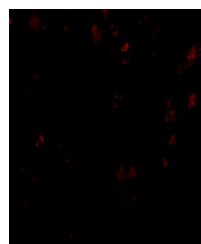
A B



Western blot analysis of EVER1 in human ...



Immunohistochemistry of EVER1 in human s...



Immunofluorescence of EVER1 in Human Spl...