

## Product Datasheet

### FAM59A Antibody (orb1239812)

**Description**

FAM59A Antibody

**Species/Host**

Rabbit

**Reactivity**

Human, Mouse, Rat

**Conjugation**

Unconjugated

**Tested**

ELISA, IF, IHC-P, WB

**Applications**
**Immunogen**

FAM59A antibody was raised against a 19 amino acid synthetic peptide from near the carboxy terminus of human FAM59A. The immunogen is located within amino acids 630 - 680 of FAM59A.

**Target**

FAM59A

**Preservatives**

FAM59A Antibody is supplied in PBS containing 0.02% sodium azide.

**Form/Appearance**

Liquid

**Concentration**

1 mg/mL

**Storage**

FAM59A antibody can be stored at 4°C for three months and -20°C, stable for up to one year. As with all antibodies care should be taken to avoid repeated freeze thaw cycles. Antibodies should not be exposed to prolonged high temperatures.

**Note**

For research use only

**Application notes**

FAM59A antibody can be used for detection of FAM59A by Western blot at 1 - 2 µg/mL. Antibody can also be used for immunohistochemistry starting at 5 µg/mL. For immunofluorescence start at 20 µg/mL. Antibody validated: Western Blot in rat samples; Immunohistochemistry in human samples and Immunofluorescence in human samples. All other applications and species not yet tested.

**Isotype**

IgG

**Clonality**

Polyclonal

**Uniprot ID**

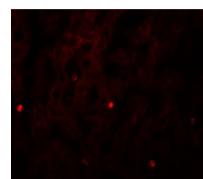
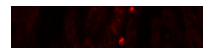
**Q9H706**

**NCBI**

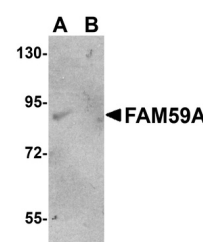
**Q9H706**

**Dilution Range**

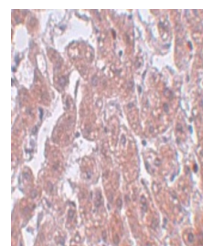
FAM59A antibody can be used for detection of FAM59A by Western blot at 1 - 2 µg/mL. Antibody can also be used for immunohistochemistry starting at 5 µg/mL. For immunofluorescence start at 20 µg/mL. Antibody validated: Western Blot in rat samples; Immunohistochemistry in human samples



Immunofluorescence of FAM59A in Human Liver



Western blot analysis of FAM59A in rat liver



Immunohistochemistry of FAM59A in human liver