

Product Datasheet

FCH02 Antibody (orb1239808)

Description
FCHO2 Antibody
Species/Host

Rabbit

Reactivity

Human, Mouse, Rat

Conjugation

Unconjugated

Tested

ELISA, IF, IHC-P, WB

Applications
Immunogen

FCHO2 antibody was raised against a 15 amino acid synthetic peptide near the center of human FCHO2. The immunogen is located within amino acids 340 - 390 of FCHO2.

Target

FCHO2

Preservatives

FCHO2 Antibody is supplied in PBS containing 0.02% sodium azide.

Form/Appearance

Liquid

Concentration

1 mg/mL

Storage

FCHO2 antibody can be stored at 4°C for three months and -20°C, stable for up to one year. As with all antibodies care should be taken to avoid repeated freeze thaw cycles. Antibodies should not be exposed to prolonged high temperatures.

Note

For research use only

Application notes

FCHO2 antibody can be used for detection of FCHO2 by Western blot at 1 - 2 µg/mL. Antibody can also be used for immunohistochemistry starting at 2.5 µg/mL. For immunofluorescence start at 2.5 µg/mL. Antibody validated: Western Blot in rat samples; Immunohistochemistry in human samples and Immunofluorescence in human samples. All other applications and species not yet tested.

Isotype

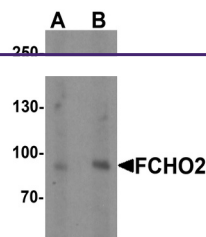
IgG

Clonality

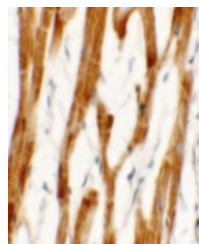
Polyclonal

Uniprot ID
Q0JRZ9
NCBI
NP_620137
Dilution Range

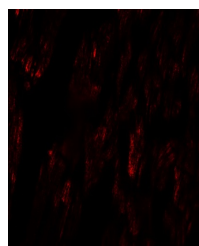
FCHO2 antibody can be used for detection of FCHO2 by Western blot at 1 - 2 µg/mL. Antibody can also be used for immunohistochemistry starting at 2.5 µg/mL. For immunofluorescence start at 2.5 µg/mL. Antibody validated: Western Blot in rat samples; Immunohistochemistry in human samples



Western blot analysis of FCHO2 in rat heart tissue.



Immunohistochemistry of FCHO2 in human heart tissue.



Immunofluorescence of FCHO2 in human heart tissue.