

Product Datasheet

EFEMP1 Antibody (orb1239802)

Description

EFEMP1 Antibody

Species/Host

Rabbit

Reactivity

Human, Mouse, Rat

Conjugation

Unconjugated

Tested

ELISA, ICC, IF, WB

Applications

Immunogen

Fibulin 3 antibody was raised against a 19 amino acid synthetic peptide near the carboxy terminus of human Fibulin 3. The immunogen is located within amino acids 410 - 460 of Fibulin 3.

Target

EFEMP1

Preservatives

Fibulin 3 Antibody is supplied in PBS containing 0.02% sodium azide.

Form/Appearance

Liquid

Concentration

1 mg/mL

Storage

Fibulin 3 antibody can be stored at 4°C for three months and -20°C, stable for up to one year. As with all antibodies care should be taken to avoid repeated freeze thaw cycles. Antibodies should not be exposed to prolonged high temperatures.

Note

For research use only

Application notes

Fibulin 3 antibody can be used for detection of Fibulin 3 by Western blot at 0.5 - 1 µg/mL. Antibody can also be used for immunocytochemistry starting at 20 µg/mL. For immunofluorescence start at 20 µg/mL. Antibody validated: Western Blot in human samples; Immunocytochemistry in human samples and Immunofluorescence in human samples. All other applications and species not yet tested.

Isotype

IgG

Clonality

Polyclonal

MW

Predicted: 52 kDa Observed: 47 kDa

Uniprot ID

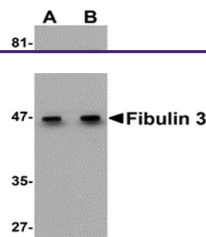
[Q12805](#)

NCBI

[NP_001034437](#)

Dilution Range

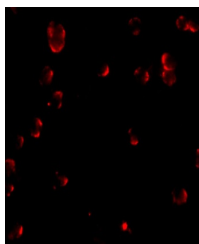
Fibulin 3 antibody can be used for detection of Fibulin 3 by Western blot at 0.5 - 1 µg/mL. Antibody can also be used for immunocytochemistry starting at 20 µg/mL. For immunofluorescence start at 20 µg/mL. Antibody validated: Western Blot in human



Western blot analysis of Fibulin 3 in HeLa...



Immunocytochemistry of Fibulin 3 in HeLa...



Immunofluorescence of Fibulin 3 in HeLa ...