

Product Datasheet

FRMPD1 Antibody (orb1239776)

Description

FRMPD1 Antibody

Species/Host

Rabbit

Reactivity

Human

Conjugation

Unconjugated

Tested

ELISA, IF, WB

Applications

Immunogen

FRMPD1 antibody was raised against a 15 amino acid synthetic peptide from near the carboxy terminus of human FRMPD1. The immunogen is located within amino acids 1330 - 1380 of FRMPD1.

Target

FRMPD1

Preservatives

FRMPD1 Antibody is supplied in PBS containing 0.02% sodium azide.

Form/Appearance

Liquid

Concentration

1 mg/mL

Storage

FRMPD1 antibody can be stored at 4°C for three months and -20°C, stable for up to one year. As with all antibodies care should be taken to avoid repeated freeze thaw cycles. Antibodies should not be exposed to prolonged high temperatures.

Note

For research use only

Application notes

FRMPD1 antibody can be used for detection of FRMPD1 by Western blot at 1 - 2 µg/mL. Antibody can also be used for immunofluorescence starting at 20 µg/mL. For immunofluorescence start at 5 µg/mL. Antibody validated: Western Blot in human samples and Immunofluorescence in human samples. All other applications and species not yet tested.

Isotype

IgG

Clonality

Polyclonal

Uniprot ID

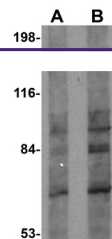
[Q5SYB0](#)

NCBI

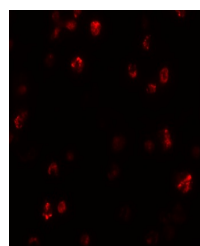
[NP_055722](#)

Dilution Range

FRMPD1 antibody can be used for detection of FRMPD1 by Western blot at 1 - 2 µg/mL. Antibody can also be used for immunofluorescence starting at 20 µg/mL. For immunofluorescence start at 5 µg/mL. Antibody validated: Western Blot in human samples and Immunofluorescence in human samples. All other applications and species not yet tested.



Western blot analysis of FRMPD1 in K562 ...



Immunofluorescence of FRMPD1 in K562 cel...