

## Product Datasheet

### GDF1 Antibody (orb1239759)

## Description

## GDF1 Antibody

### Species/Host

Rabbit

### Reactivity

Human, Mouse, Rat

### Conjugation

Unconjugated

### Tested

ELISA, IF, WB

### Applications

### Immunogen

Rabbit polyclonal GDF1 antibody was raised against a 16 amino acid peptide near the amino terminus of human GDF1. The immunogen is located within amino acids 30 - 80 of GDF1.

### Target

GDF1

### Preservatives

GDF1 Antibody is supplied in PBS containing 0.02% sodium azide.

### Form/Appearance

Liquid

### Concentration

1 mg/mL

### Storage

GDF1 antibody can be stored at 4°C for three months and -20°C, stable for up to one year. As with all antibodies care should be taken to avoid repeated freeze thaw cycles. Antibodies should not be exposed to prolonged high temperatures.

### Note

For research use only

### Application notes

GDF1 antibody can be used for detection of GDF1 by Western blot at 1 - 2 µg/mL. For immunofluorescence start at 20 µg/mL. Antibody validated: Western Blot in rat samples and Immunofluorescence in human samples. All other applications and species not yet tested.

### Isotype

IgG

### Clonality

Polyclonal

### MW

41 kDa

### Uniprot ID

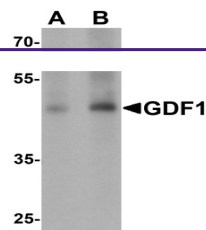
[P27539](#)

### NCBI

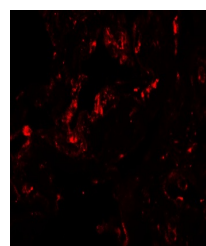
[NP\\_001483](#)

### Dilution Range

GDF1 antibody can be used for detection of GDF1 by Western blot at 1 - 2 µg/mL. For immunofluorescence start at 20 µg/mL. Antibody validated: Western Blot in rat samples and Immunofluorescence in human samples. All other applications and species not yet tested.



Western blot analysis of GDF1 in rat lung...



Immunofluorescence of GDF1 in human lung...