

Product Datasheet

GFRA2 Antibody (orb1239756)

Description

GFRA2 Antibody

Species/Host

Rabbit

Reactivity

Human, Mouse, Rat

Conjugation

Unconjugated

Tested

ELISA, ICC, WB

Applications

Immunogen

GFR alpha 2 antibody was raised against a 15 amino acid peptide near the center of human GFR alpha 2. The immunogen is located within amino acids 360 - 410 of GFR alpha 2.

Target

GFRA2

Preservatives

GFR alpha 2 Antibody is supplied in PBS containing 0.02% sodium azide.

Form/Appearance

Liquid

Concentration

1 mg/ml

Storage

GFR alpha 2 antibody can be stored at 4°C for three months and -20°C, stable for up to one year. As with all antibodies care should be taken to avoid repeated freeze thaw cycles. Antibodies should not be exposed to prolonged high temperatures.

Note

For research use only

Application notes

GFR alpha 2 antibody can be used for detection of GFR alpha 2 by Western blot at 1 µg/mL. A 52 kDa band should be detected. Antibody can also be used for immunocytochemistry starting at 5 µg/mL. Antibody validated: Western Blot in human samples and Immunocytochemistry in human samples. All other applications and species not yet tested.

Isotype

IgG

Clonality

Polyclonal

MW

Predicted: 51 kDa Observed: 52 kDa

Uniprot ID

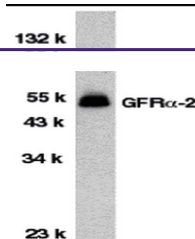
[O00451](#)

NCBI

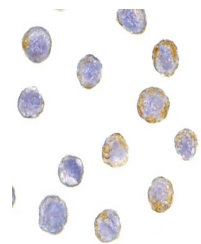
[AAC52036](#)

Dilution Range

GFR alpha 2 antibody can be used for detection of GFR alpha 2 by Western blot at 1 µg/mL. A 52 kDa band should be detected. Antibody can also be used for immunocytochemistry starting at 5 µg/mL. Antibody validated: Western Blot in human samples and Immunocytochemistry in human samples. All



Western blot analysis of GFR alpha 2 in ...



Immunocytochemistry of GFR alpha 2 in He...