

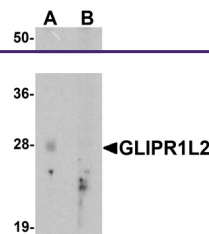
Product Datasheet

GLIPR1L2 Antibody (orb1239747)

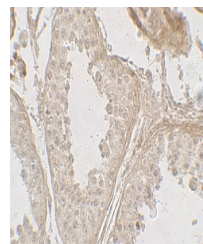
Description

GLIPR1L2 Antibody

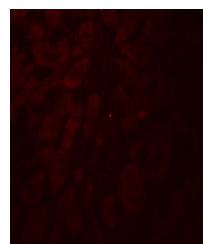
Species/Host	Rabbit
Reactivity	Human
Conjugation	Unconjugated
Tested Applications	ELISA, IF, IHC-P, WB
Immunogen	GLIPR1L2 antibody was raised against an 15 amino acid peptide near the center of human GLIPR1L2. The immunogen is located within amino acids 120 - 170 of GLIPR1L2.
Target	GLIPR1L2
Preservatives	GLIPR1L2 antibody is supplied in PBS containing 0.02% sodium azide.
Form/Appearance	Liquid
Concentration	1 mg/mL
Storage	GLIPR1L2 antibody can be stored at 4°C for three months and -20°C, stable for up to one year.
Note	For research use only
Application notes	GLIPR1L2 antibody can be used for detection of GLIPR1L2 by Western blot at 1 - 2 µg/ml. Antibody can also be used for Immunohistochemistry starting at 5 µg/mL. For immunofluorescence start at 20 µg/mL. Antibody validated: Western Blot in human samples; Immunohistochemistry in human samples and Immunofluorescence in human samples. All other applications and species not yet tested.
Isotype	IgG
Clonality	Polyclonal
MW	Predicted: 28, 31, 38 kDa Observed: 28 kDa
Uniprot ID	Q4G1C9
NCBI	NP_001257325
Dilution Range	GLIPR1L2 antibody can be used for detection of GLIPR1L2 by Western blot at 1 - 2 µg/ml. Antibody can also be used for Immunohistochemistry starting at 5 µg/mL. For immunofluorescence start at 20 µg/mL. Antibody validated: Western Blot in human samples; Immunohistochemistry in human samples and Immunofluorescence in human samples. All other applications and species not yet tested.



Western blot analysis of GLIPR1L2 in hum...



Immunohistochemistry of GLIPR1L2 in huma...



Immunofluorescence of GLIPR1L2 in human ...