

## Product Datasheet

### GRK6 Antibody (orb1239726)

## Description

GRK6 Antibody

### Species/Host

Rabbit

### Reactivity

Human, Mouse, Rat

### Conjugation

Unconjugated

### Tested Applications

ELISA, IF, IHC-P, WB

### Immunogen

GRK6 antibody was raised against a 19 amino acid peptide near the carboxy terminus of human GRK6. The immunogen is located within the last 50 amino acids of GRK6.

### Target

GRK6

### Preservatives

GRK6 antibody is supplied in PBS containing 0.02% sodium azide.

### Form/Appearance

Liquid

### Concentration

1 mg/mL

### Storage

GRK6 antibody can be stored at 4°C for three months and -20°C, stable for up to one year.

### Note

For research use only

### Application notes

GRK6 antibody can be used for detection of GRK6 by Western blot at 1 - 2 µg/ml. Antibody can also be used for Immunohistochemistry starting at 5 µg/mL. For immunofluorescence start at 20 µg/mL. Antibody validated: Western Blot in rat samples; Immunohistochemistry in human samples and Immunofluorescence in human samples. All other applications and species not yet tested.

### Isotype

IgG

### Clonality

Polyclonal

### MW

Predicted: 63 kDa Observed: 63 kDa

### Uniprot ID

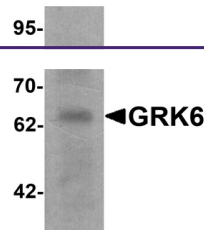
[P43250](#)

### NCBI

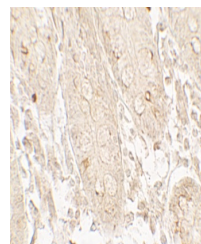
[NP\\_001004106](#)

### Dilution Range

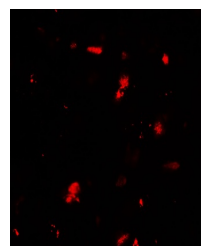
GRK6 antibody can be used for detection of GRK6 by Western blot at 1 - 2 µg/ml. Antibody can also be used for Immunohistochemistry starting at 5 µg/mL. For immunofluorescence start at 20 µg/mL. Antibody validated: Western Blot in rat samples; Immunohistochemistry in human samples and Immunofluorescence in human samples. All other applications and species not yet tested.



Western blot analysis of GRK6 in rat sma...



Immunohistochemistry of GRK6 in human sm...



Immunofluorescence of GRK6 in human smal...