

Product Datasheet

IER3 Antibody (orb1239697)

Description

IER3 Antibody

Species/Host

Rabbit

Reactivity

Human, Mouse

Conjugation

Unconjugated

Tested

ELISA, IF, IHC-P, WB

Applications
Immunogen

IER3 antibody was raised against a 24 amino acid synthetic peptide near the center of human IER3. The immunogen is located within amino acids 40 - 90 of IER3.

Target

IER3

Preservatives

IER3 Antibody is supplied in PBS containing 0.02% sodium azide.

Form/Appearance

Liquid

Concentration

1 mg/mL

Storage

IER3 antibody can be stored at 4°C for three months and -20°C, stable for up to one year. As with all antibodies care should be taken to avoid repeated freeze thaw cycles. Antibodies should not be exposed to prolonged high temperatures.

Note

For research use only

Application notes

IER3 antibody can be used for detection of IER3 by Western blot at 1 - 2 µg/mL. Antibody can also be used for immunohistochemistry starting at 2.5 µg/mL. For immunofluorescence start at 20 µg/mL. Antibody validated: Western Blot in mouse samples; Immunohistochemistry in human samples and Immunofluorescence in human samples. All other applications and species not yet tested.

Isotype

IgG

Clonality

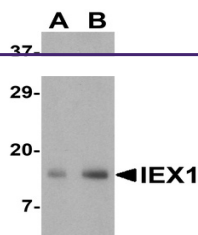
Polyclonal

MW

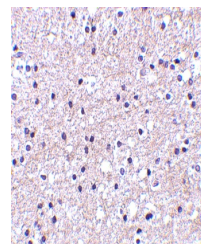
Predicted: 17 kDa Observed: 17 kDa

Uniprot ID
[P46695](#)
NCBI
[P46695](#)
Dilution Range

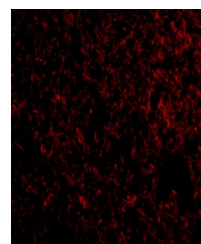
IER3 antibody can be used for detection of IER3 by Western blot at 1 - 2 µg/mL. Antibody can also be used for immunohistochemistry starting at 2.5 µg/mL. For immunofluorescence start at 20 µg/mL. Antibody validated: Western Blot in mouse samples;



Western blot analysis of IER3 in mouse ...



Immunohistochemistry of IER3 in human l...



Immunofluorescence of IER3 in Human Bra...