

## Product Datasheet

### IL16 Antibody (orb1239680)

## Description

## IL16 Antibody

### Species/Host

Rabbit

### Reactivity

Human, Mouse, Rat

### Conjugation

Unconjugated

### Tested

ELISA, IF, IHC-P, WB

### Applications

### Immunogen

IL-16 antibody was raised against a 20 amino acid synthetic peptide near the amino terminus of human IL-16. The immunogen is located within the first 50 amino acids of IL-16.

### Target

IL16

### Preservatives

IL-16 Antibody is supplied in PBS containing 0.02% sodium azide.

### Form/Appearance

Liquid

### Concentration

1 mg/mL

### Storage

IL-16 antibody can be stored at 4°C for three months and -20°C, stable for up to one year. As with all antibodies care should be taken to avoid repeated freeze thaw cycles. Antibodies should not be exposed to prolonged high temperatures.

### Note

For research use only

### Application notes

IL-16 antibody can be used for detection of IL-16 by Western blot at 1 - 2 µg/mL. Antibody can also be used for immunohistochemistry starting at 2.5 µg/mL. For immunofluorescence start at 20 µg/mL. Antibody validated: Western Blot in rat samples; Immunohistochemistry in mouse samples and Immunofluorescence in mouse samples. All other applications and species not yet tested.

### Isotype

IgG

### Clonality

Polyclonal

### Uniprot ID

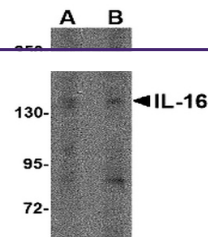
[Q14005](#)

### NCBI

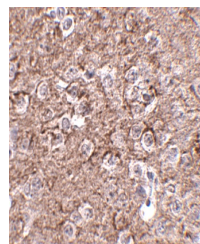
[AAQ86961](#)

### Dilution Range

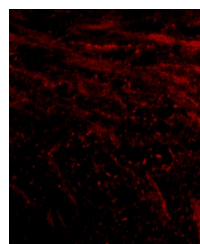
IL-16 antibody can be used for detection of IL-16 by Western blot at 1 - 2 µg/mL. Antibody can also be used for immunohistochemistry starting at 2.5 µg/mL. For immunofluorescence start at 20 µg/mL. Antibody validated: Western Blot in rat samples; Immunohistochemistry in mouse samples and



Western blot analysis of IL-16 in rat br...



Immunohistochemistry of IL-16 in mouse b...



Immunofluorescence of IL-16 in mouse bra...