

## Product Datasheet

### IL22 Antibody (orb1239668)

## Description

## IL22 Antibody

### Species/Host

Rabbit

### Reactivity

Human, Mouse, Rat

### Conjugation

Unconjugated

### Tested

ELISA, ICC, IF, WB

### Applications

### Immunogen

IL-22 antibody was raised against a 17 amino acid peptide near the center of human IL-22 .The immunogen is located within amino acids 90 - 140 of IL-22.

### Target

IL22

### Preservatives

IL-22 antibody is supplied in PBS containing 0.02% sodium azide.

### Form/Appearance

Liquid

### Concentration

1 mg/mL

### Storage

IL-22 antibody can be stored at 4°C for three months and -20°C, stable for up to one year.

### Note

For research use only

### Application notes

IL-22 antibody can be used for detection of IL-22 by Western blot at 0.5 µg/ml. Antibody can also be used for Immunocytochemistry starting at 5 µg/mL. For immunofluorescence start at 20 µg/mL. Antibody validated: Western Blot in human samples; Immunocytochemistry in human samples and Immunofluorescence in human samples. All other applications and species not yet tested.

### Isotype

IgG

### Clonality

Polyclonal

### MW

Predicted: 20 kDa Observed: 17 kDa

### Uniprot ID

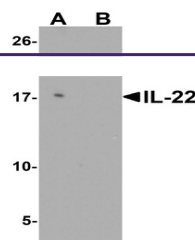
[Q9GZX6](#)

### NCBI

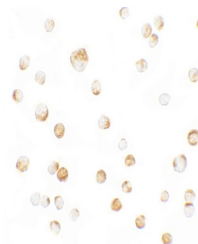
[NP\\_065386](#)

### Dilution Range

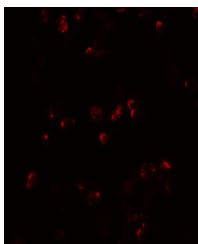
IL-22 antibody can be used for detection of IL-22 by Western blot at 0.5 µg/ml. Antibody can also be used for Immunocytochemistry starting at 5 µg/mL. For immunofluorescence start at 20 µg/mL. Antibody validated: Western Blot in human samples; Immunocytochemistry in human samples and Immunofluorescence in human samples. All other applications and species not yet tested.



Western blot analysis of IL-22 in HeLa c...



Immunocytochemistry of IL-22 in HeLa cel...



Immunofluorescence of IL-22 in HeLa cell...