

## Product Datasheet

### NRTN Antibody (orb1239666)

## Description

## NRTN Antibody

### Species/Host

Rabbit

### Reactivity

Human, Mouse

### Conjugation

Unconjugated

### Tested

ELISA, IF, IHC-P, WB

### Applications

### Immunogen

Neurturin antibody was raised against a 16 amino acid peptide near the carboxy terminus of human Neurturin. The immunogen is located within the last 50 amino acids of Neurturin.

### Target

NRTN

### Preservatives

Neurturin Antibody is supplied in PBS containing 0.02% sodium azide.

### Form/Appearance

Liquid

### Concentration

1 mg/ml

### Storage

Neurturin antibody can be stored at 4°C for three months and -20°C, stable for up to one year. As with all antibodies care should be taken to avoid repeated freeze thaw cycles. Antibodies should not be exposed to prolonged high temperatures.

### Note

For research use only

### Application notes

Neurturin antibody can be used for detection of neurturin by Western blot. An approximate 14 kDa band of the full length recombinant NTN was detected. Antibody can also be used for immunohistochemistry starting at 5 µg/mL. For immunofluorescence start at 5 µg/mL. Antibody validated: Western Blot in human samples; Immunohistochemistry in human and mouse samples and Immunofluorescence in human and mouse samples. All other applications and species not yet tested.

### Isotype

IgG

### Clonality

Polyclonal

### MW

14 kDa

### Uniprot ID

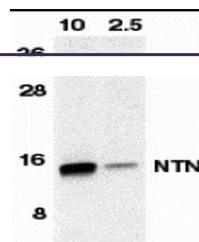
[Q99748](#)

### NCBI

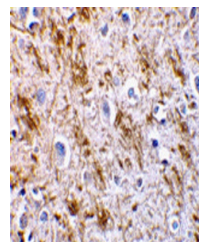
[NP\\_004549](#)

### Dilution Range

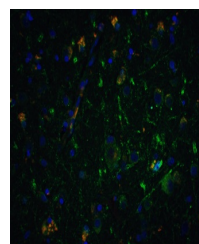
Neurturin antibody can be used for detection of neurturin by Western blot. An approximate 14 kDa



Western blot analysis of NTN in HeLa cells



Immunohistochemistry of neurturin in human tissue



Immunofluorescence of Neurturin in human tissue