

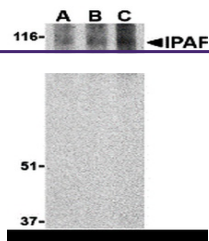
Product Datasheet

NLRC4 Antibody (orb1239640)

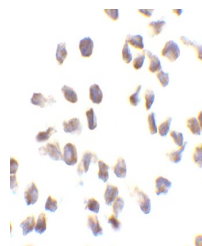
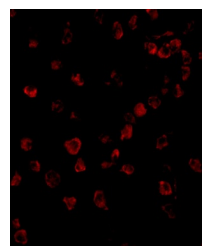
Description

NLRC4 Antibody

| | |
|---------------------|---|
| Species/Host | Rabbit |
| Reactivity | Human |
| Conjugation | Unconjugated |
| Tested Applications | ELISA, ICC, IF, WB |
| Immunogen | Ipaf antibody was raised against a synthetic peptide corresponding to amino acids near the C-terminus of human Ipaf.The immunogen is located within the last 50 amino acids of Ipaf. |
| Target | NLRC4 |
| Preservatives | Ipaf Antibody is supplied in PBS containing 0.02% sodium azide. |
| Form/Appearance | Liquid |
| Concentration | 1 mg/mL |
| Storage | Ipaf antibody can be stored at 4°C for three months and -20°C, stable for up to one year. As with all antibodies care should be taken to avoid repeated freeze thaw cycles. Antibodies should not be exposed to prolonged high temperatures. |
| Note | For research use only |
| Application notes | Ipaf polyclonal antibody can be used for the detection of Ipaf by Western blot at 1 and 2 µg/mL. A 110 kDa band can be detected. Antibody can also be used for immunocytochemistry starting at 10 µg/mL. For immunofluorescence start at 10 µg/mL.Antibody validated: Western Blot in human samples; Immunocytochemistry in human samples and Immunofluorescence in human samples. All other applications and species not yet tested. |
| Isotype | IgG |
| Clonality | Polyclonal |
| MW | 110 kDa |
| Uniprot ID | Q9NPP4 |
| NCBI | NP_067032 |
| Dilution Range | Ipaf polyclonal antibody can be used for the detection of Ipaf by Western blot at 1 and 2 µg/mL. A 110 kDa band can be detected. Antibody can also be used for immunocytochemistry starting at 10 µg/mL. |



Western blot analysis of Ipaf in human P...

Immunocytochemistry
of Ipaf in THP-1 cel...

Immunofluorescence of Ipaf in THP1 cells...