

Product Datasheet

KDM4A Antibody (orb1239605)

Description
KDM4A Antibody
Species/Host

Rabbit

Reactivity

Human, Mouse, Rat

Conjugation

Unconjugated

Tested

ELISA, IHC-P, WB

Applications
Immunogen

JMJD2A antibody was raised against a 14 amino acid synthetic peptide from near the center of human JMJD2A. The immunogen is located within amino acids 340 - 390 of JMJD2A.

Target

KDM4A

Preservatives

JMJD2A Antibody is supplied in PBS containing 0.02% sodium azide.

Form/Appearance

Liquid

Concentration

1 mg/mL

Storage

JMJD2A antibody can be stored at 4°C for three months and -20°C, stable for up to one year. As with all antibodies care should be taken to avoid repeated freeze thaw cycles. Antibodies should not be exposed to prolonged high temperatures.

Note

For research use only

Application notes

JMJD2A antibody can be used for detection of JMJD2A by Western blot at 1 - 2 µg/mL. Antibody can also be used for immunohistochemistry starting at 5 µg/mL. Antibody validated: Western Blot in rat samples and Immunohistochemistry in rat samples. All other applications and species not yet tested.

Isotype

IgG

Clonality

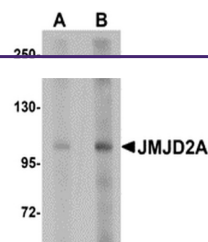
Polyclonal

Uniprot ID
075164
NCBI
CAH71021
Dilution Range

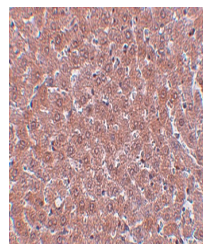
JMJD2A antibody can be used for detection of JMJD2A by Western blot at 1 - 2 µg/mL. Antibody can also be used for immunohistochemistry starting at 5 µg/mL. Antibody validated: Western Blot in rat samples and Immunohistochemistry in rat samples. All other applications and species not yet tested.

Expiration Date

12 months from date of receipt.



Western blot analysis of JMJD2A in rat liver tissue.



Immunohistochemistry of JMJD2A in rat liver tissue.