

Product Datasheet

KDM8 Antibody (orb1239602)

Description

KDM8 Antibody

Species/Host

Rabbit

Reactivity

Human, Mouse, Rat

Conjugation

Unconjugated

Tested

ELISA, IF, IHC-P, WB

Applications

Immunogen

JMJD5 antibody was raised against an 18 amino acid synthetic peptide from near the carboxy terminus of human JMJD5. The immunogen is located within amino acids 350 - 400 of JMJD5.

Target

KDM8

Preservatives

JMJD5 Antibody is supplied in PBS containing 0.02% sodium azide.

Form/Appearance

Liquid

Concentration

1 mg/mL

Storage

JMJD5 antibody can be stored at 4°C for three months and -20°C, stable for up to one year. As with all antibodies care should be taken to avoid repeated freeze thaw cycles. Antibodies should not be exposed to prolonged high temperatures.

Note

For research use only

Application notes

JMJD5 antibody can be used for detection of JMJD5 by Western blot at 1 - 2 µg/mL. Antibody can also be used for immunohistochemistry starting at 2.5 µg/mL. For immunofluorescence start at 20 µg/mL. Antibody validated: Western Blot in human samples; Immunohistochemistry in rat samples and Immunofluorescence in rat samples. All other applications and species not yet tested.

Isotype

IgG

Clonality

Polyclonal

Uniprot ID

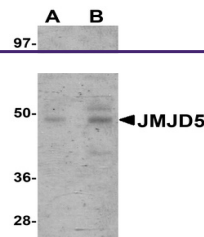
[Q8N371](#)

NCBI

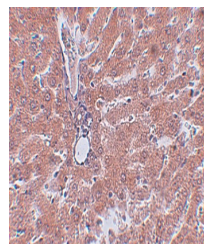
[NP_001138820](#)

Dilution Range

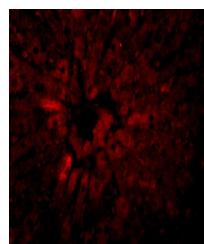
JMJD5 antibody can be used for detection of JMJD5 by Western blot at 1 - 2 µg/mL. Antibody can also be used for immunohistochemistry starting at 2.5 µg/mL. For immunofluorescence start at 20 µg/mL. Antibody validated: Western Blot in human samples; Immunohistochemistry in rat samples and



Western blot analysis of JMJD5 in human ...



Immunohistochemistry of JMJD5 in rat liv...



Immunofluorescence of JMJD5 in Rat Liver...