

Product Datasheet

JPH4 Antibody (orb1239597)

Description

JPH4 Antibody

Species/Host

Rabbit

Reactivity

Human, Mouse, Rat

Conjugation

Unconjugated

Tested

ELISA, IHC-P, WB

Applications

Immunogen

JPH2 antibody was raised against a 17 amino acid synthetic peptide near the carboxy terminus of human JPH2. The immunogen is located within amino acids 470 - 520 of JPH2.

Target

JPH4

Preservatives

JPH2 Antibody is supplied in PBS containing 0.02% sodium azide.

Form/Appearance

Liquid

Concentration

1 mg/mL

Storage

JPH2 antibody can be stored at 4°C for three months and -20°C, stable for up to one year. As with all antibodies care should be taken to avoid repeated freeze thaw cycles. Antibodies should not be exposed to prolonged high temperatures.

Note

For research use only

Application notes

JPH2 antibody can be used for detection of JPH2 by Western blot at 1 - 2 µg/mL. Antibody can also be used for immunohistochemistry starting at 2.5 µg/mL. Antibody validated: Western Blot in mouse samples and Immunohistochemistry in mouse samples. All other applications and species not yet tested.

Isotype

IgG

Clonality

Polyclonal

Uniprot ID

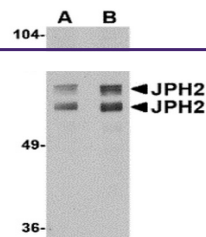
[Q96JJ6](#)

NCBI

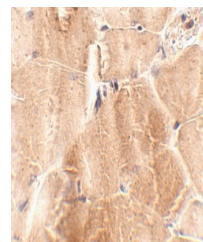
[NP_065166](#)

Dilution Range

JPH2 antibody can be used for detection of JPH2 by Western blot at 1 - 2 µg/mL. Antibody can also be used for immunohistochemistry starting at 2.5 µg/mL. Antibody validated: Western Blot in mouse samples and Immunohistochemistry in mouse samples. All other applications and species not yet tested.



Western blot analysis of JPH2 in mouse brain tissue.



Immunohistochemistry of JPH2 in mouse skin tissue.