

Product Datasheet

CD82 Antibody (orb1239593)

Description

CD82 Antibody

Species/Host

Rabbit

Reactivity

Human, Mouse, Rat

Conjugation

Unconjugated

Tested

ELISA, IF, IHC-P, WB

Applications
Immunogen

KAI1 antibody was raised against a 15 amino acid synthetic peptide from near the carboxy terminus of human KAI1. The immunogen is located within the last 50 amino acids of KAI1.

Target

CD82

Preservatives

KAI1 Antibody is supplied in PBS containing 0.02% sodium azide.

Form/Appearance

Liquid

Concentration

1 mg/mL

Storage

KAI1 antibody can be stored at 4°C for three months and -20°C, stable for up to one year. As with all antibodies care should be taken to avoid repeated freeze thaw cycles. Antibodies should not be exposed to prolonged high temperatures.

Note

For research use only

Application notes

KAI1 antibody can be used for detection of KAI1 by Western blot at 0.5 - 1 µg/mL. Antibody can also be used for immunohistochemistry starting at 2.5 µg/mL. For immunofluorescence start at 20 µg/mL. Antibody validated: Western Blot in human samples; Immunohistochemistry in human samples and Immunofluorescence in human samples. All other applications and species not yet tested.

Isotype

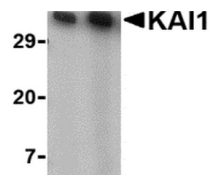
IgG

Clonality

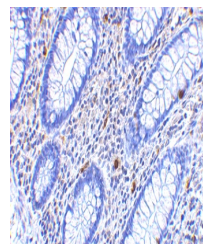
Polyclonal

Uniprot ID
P27701
NCBI
NP_002222
Dilution Range

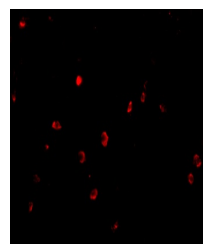
KAI1 antibody can be used for detection of KAI1 by Western blot at 0.5 - 1 µg/mL. Antibody can also be used for immunohistochemistry starting at 2.5 µg/mL. For immunofluorescence start at 20 µg/mL. Antibody validated: Western Blot in human samples; Immunohistochemistry in human samples

A B


Western blot analysis of KAI1 in A549 ce...



Immunohistochemistry of KAI1 in human co...



Immunofluorescence of KAI1 in Human Colo...