

Product Datasheet

NKIRAS1 Antibody (orb1239589)

Description

NKIRAS1 Antibody

Species/Host

Rabbit

Reactivity

Human, Mouse

Conjugation

Unconjugated

Tested

ELISA, ICC, WB

Applications

Immunogen

KappaB ras1 antibody was raised against a 15 amino acid synthetic peptide from near the carboxy terminus of human KappaB ras1. The immunogen is located within the last 50 amino acids of KappaB ras1.

Target

NKIRAS1

Preservatives

KappaB ras1 Antibody is supplied in PBS containing 0.02% sodium azide.

Form/Appearance

Liquid

Concentration

1 mg/ml

Storage

KappaB ras1 antibody can be stored at 4°C for three months and -20°C, stable for up to one year. As with all antibodies care should be taken to avoid repeated freeze thaw cycles. Antibodies should not be exposed to prolonged high temperatures.

Note

For research use only

Application notes

KappaB ras1 antibody can be used for detection of KappaB ras1 by Western blot at 0.5 - 2 µg/mL. Antibody can also be used for immunocytochemistry starting at 1 µg/mL. Antibody validated: Western Blot in mouse samples and Immunocytochemistry in mouse samples. All other applications and species not yet tested.

Isotype

IgG

Clonality

Polyclonal

Uniprot ID

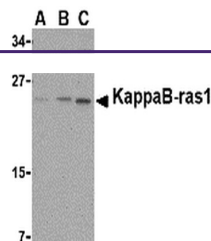
[Q9NYS0](#)

NCBI

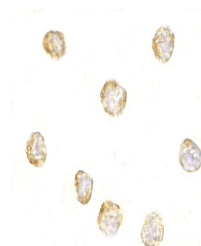
[AAF34998](#)

Dilution Range

KappaB ras1 antibody can be used for detection of KappaB ras1 by Western blot at 0.5 - 2 µg/mL. Antibody can also be used for immunocytochemistry starting at 1 µg/mL. Antibody validated: Western Blot in mouse samples and Immunocytochemistry in mouse samples. All other applications and species



Western blot analysis of KappaB ras1 in ...



Immunocytochemistry of KappaB-ras1 in RA...