

Product Datasheet

KLF17 Antibody (orb1239575)

Description

KLF17 Antibody

Species/Host

Rabbit

Reactivity

Human, Mouse, Rat

Conjugation

Unconjugated

Tested

ELISA, IHC-P, WB

Applications

Immunogen

KLF17 antibody was raised against a 17 amino acid peptide near the carboxy terminus of human KLF17. The immunogen is located within the last 50 amino acids of KLF17.

Target

KLF17

Preservatives

KLF17 antibody is supplied in PBS containing 0.02% sodium azide.

Form/Appearance

Liquid

Concentration

1 mg/mL

Storage

KLF17 antibody can be stored at 4°C for three months and -20°C, stable for up to one year.

Note

For research use only

Application notes

KLF17 antibody can be used for detection of KLF17 by Western blot at 1 - 2 µg/ml. Antibody can also be used for immunohistochemistry starting at 5 µg/mL. Antibody validated: Western Blot in rat samples and Immunohistochemistry in mouse samples. All other applications and species not yet tested.

Isotype

IgG

Clonality

Polyclonal

MW

Predicted: 28, 39, 43 kDa Observed: 38 kDa

Uniprot ID

[Q5JT82](#)

NCBI

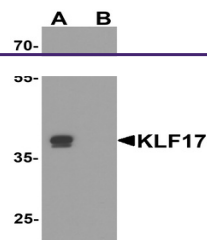
[NP_775755](#)

Dilution Range

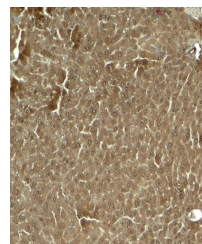
KLF17 antibody can be used for detection of KLF17 by Western blot at 1 - 2 µg/ml. Antibody can also be used for immunohistochemistry starting at 5 µg/mL. Antibody validated: Western Blot in rat samples and Immunohistochemistry in mouse samples. All other applications and species not yet tested.

Expiration Date

12 months from date of receipt.



Western blot analysis of KLF17 in rat li...



Immunohistochemistry of KLF17 in mouse l...