

Product Datasheet

KLK4 Antibody (orb1239571)

Description

KLK4 Antibody

Species/Host

Rabbit

Reactivity

Human

Conjugation

Unconjugated

Tested Applications

ELISA, IF, IHC-P, WB

Immunogen

KLK4 antibody was raised against a 15 amino acid peptide near the center of human KLK4. The immunogen is located within amino acids 80 - 130 of KLK4 .

Target

KLK4

Preservatives

KLK4 Antibody is supplied in PBS containing 0.02% sodium azide.

Form/Appearance

Liquid

Concentration

1 mg/mL

Storage

KLK4 antibody can be stored at 4°C for three months and -20°C, stable for up to one year.

Note

For research use only

Application notes

KLK4 antibody can be used for detection of KLK4 by Western blot at 1 - 2 µg/ml. Antibody validated: Western Blot in human samples; Immunohistochemistry in human samples and Immunofluorescence in human samples. All other applications and species not yet tested.

Isotype

IgG

Clonality

Polyclonal

MW

Predicted: 28 kDa Observed: 31kDa

Uniprot ID

[Q9Y5K2](#)

NCBI

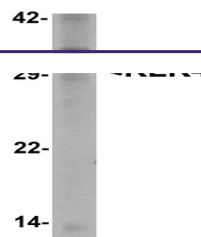
[NP_004908](#)

Dilution Range

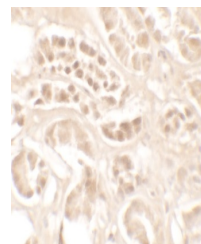
KLK4 antibody can be used for detection of KLK4 by Western blot at 1 - 2 µg/ml. Antibody validated: Western Blot in human samples; Immunohistochemistry in human samples and Immunofluorescence in human samples. All other applications and species not yet tested.

Expiration Date

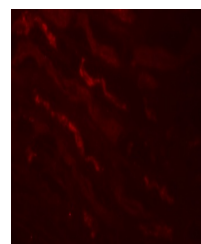
12 months from date of receipt.



Western blot analysis of KLK4 in human kidney tissue.



Immunohistochemistry of KLK4 in human kidney tissue.



Immunofluorescence of KLK4 in human kidney tissue.