

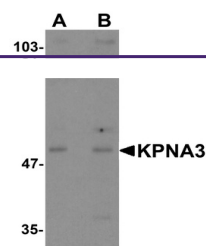
Product Datasheet

KPNA3 Antibody (orb1239564)

Description

KPNA3 Antibody

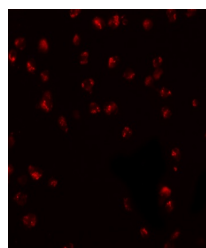
Species/Host	Rabbit
Reactivity	Human, Mouse, Rat
Conjugation	Unconjugated
Tested Applications	ELISA, ICC, IF, WB
Immunogen	KPNA3 antibody was raised against a 14 amino acid synthetic peptide near the carboxy end of human KPNA3. The immunogen is located within the last 50 amino acids of KPNA3.
Target	KPNA3
Preservatives	KPNA3 Antibody is supplied in PBS containing 0.02% sodium azide.
Form/Appearance	Liquid
Concentration	1 mg/mL
Storage	KPNA3 antibody can be stored at 4°C for three months and -20°C, stable for up to one year. As with all antibodies care should be taken to avoid repeated freeze thaw cycles. Antibodies should not be exposed to prolonged high temperatures.
Note	For research use only
Application notes	KPNA3 antibody can be used for detection of KPNA3 by Western blot at 1 - 2 µg/mL. Antibody can also be used for immunocytochemistry starting at 10 µg/mL. For immunofluorescence start at 20 µg/mL. Antibody validated: Western Blot in mouse samples; Immunocytochemistry in human samples and Immunofluorescence in mouse samples. All other applications and species not yet tested.
Isotype	IgG
Clonality	Polyclonal
Uniprot ID	O00505
NCBI	NP_002258
Dilution Range	KPNA3 antibody can be used for detection of KPNA3 by Western blot at 1 - 2 µg/mL. Antibody can also be used for immunocytochemistry starting at 10 µg/mL. For immunofluorescence start at 20 µg/mL. Antibody validated: Western Blot in mouse samples; Immunocytochemistry in human samples and



Western blot analysis of KPNA3 in EL4 cells...



Immunocytochemistry of KPNA3 in HeLa cells...



Immunofluorescence of KPNA3 in EL4 cells...