

## Product Datasheet

### KPNA5 Antibody (orb1239562)

## Description

## KPNA5 Antibody

### Species/Host

Rabbit

### Reactivity

Human, Mouse

### Conjugation

Unconjugated

### Tested

ELISA, ICC, IF, WB

### Applications

### Immunogen

KPNA5 antibody was raised against an 18 amino acid synthetic peptide near the amino terminus of human KPNA5. The immunogen is located within amino acids 50 - 100 of KPNA5.

### Target

KPNA5

### Preservatives

KPNA5 Antibody is supplied in PBS containing 0.02% sodium azide.

### Form/Appearance

Liquid

### Concentration

1 mg/mL

### Storage

KPNA5 antibody can be stored at 4°C for three months and -20°C, stable for up to one year. As with all antibodies care should be taken to avoid repeated freeze thaw cycles. Antibodies should not be exposed to prolonged high temperatures.

### Note

For research use only

### Application notes

KPNA5 antibody can be used for detection of EPAC1 by Western blot at 1 µg/mL. Antibody can also be used for immunocytochemistry starting at 5 µg/mL. For immunofluorescence start at 5 µg/mL. Antibody validated: Western Blot in mouse samples; Immunocytochemistry in mouse samples and Immunofluorescence in mouse samples. All other applications and species not yet tested.

### Isotype

IgG

### Clonality

Polyclonal

### Uniprot ID

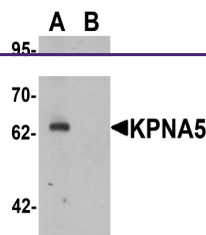
[O15131](#)

### NCBI

[CAH71948](#)

### Dilution Range

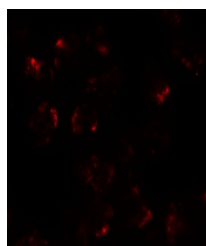
KPNA5 antibody can be used for detection of EPAC1 by Western blot at 1 µg/mL. Antibody can also be used for immunocytochemistry starting at 5 µg/mL. For immunofluorescence start at 5 µg/mL. Antibody validated: Western Blot in mouse samples; Immunocytochemistry in mouse samples and



Western blot analysis of KPNA5 in EL4 cells...



Immunocytochemistry of KPNA5 in EL4 cells...



Immunofluorescence of KPNA5 in EL4 cells...