

Product Datasheet

KPNA6 Antibody (orb1239561)

Description

KPNA6 Antibody

Species/Host

Rabbit

Reactivity

Human, Mouse, Rat

Conjugation

Unconjugated

Tested

ELISA, IF, WB

Applications
Immunogen

KPNA6 antibody was raised against a 13 amino acid synthetic peptide near the amino terminus of human KPNA6. The immunogen is located within amino acids 70 - 120 of KPNA6.

Target

KPNA6

Preservatives

KPNA6 Antibody is supplied in PBS containing 0.02% sodium azide.

Form/Appearance

Liquid

Concentration

1 mg/mL

Storage

KPNA6 antibody can be stored at 4°C for three months and -20°C, stable for up to one year. As with all antibodies care should be taken to avoid repeated freeze thaw cycles. Antibodies should not be exposed to prolonged high temperatures.

Note

For research use only

Application notes

KPNA6 antibody can be used for detection of KPNA6 by Western blot at 1 µg/mL. Antibody can also be used for immunofluorescence starting at 20 µg/mL. For immunofluorescence start at 20 µg/mL. Antibody validated: Western Blot in human samples and Immunofluorescence in human samples. All other applications and species not yet tested.

Isotype

IgG

Clonality

Polyclonal

Uniprot ID

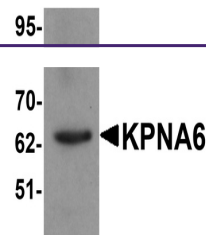
O60684

NCBI

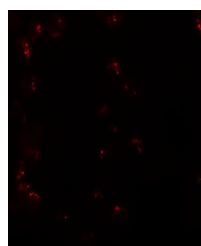
CAH71948

Dilution Range

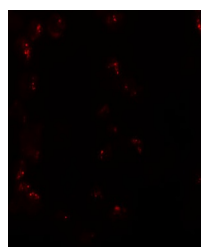
KPNA6 antibody can be used for detection of KPNA6 by Western blot at 1 µg/mL. Antibody can also be used for immunofluorescence starting at 20 µg/mL. For immunofluorescence start at 20 µg/mL. Antibody validated: Western Blot in human samples and Immunofluorescence in human samples. All other applications and species not yet tested.



Western blot analysis of KPNA6 in 293 cells...



Immunofluorescence of KPNA6 in 293 cells...



Immunofluorescence of KPNA6 in 293 cells...