

Product Datasheet

LAMP1 Antibody (orb1239552)

Description

LAMP1 Antibody

Species/Host

Rabbit

Reactivity

Human, Mouse, Rat

Conjugation

Unconjugated

Tested

ELISA, IF, IHC-P, WB

Applications

Immunogen

LAMP-1 antibody was raised against a 15 amino acid synthetic peptide from near the center of human LAMP-1. The immunogen is located within amino acids 230 - 280 of LAMP-1.

Target

LAMP1

Preservatives

LAMP-1 Antibody is supplied in PBS containing 0.02% sodium azide.

Form/Appearance

Liquid

Concentration

1 mg/mL

Storage

LAMP-1 antibody can be stored at 4°C up to one year. Antibodies should not be exposed to prolonged high temperatures.

Note

For research use only

Application notes

LAMP-1 antibody can be used for the detection of LAMP-1 by Western blot at 1 - 2 µg/mL. Antibody can also be used for immunohistochemistry starting at 2.5 µg/mL. For immunofluorescence start at 20 µg/mL. Antibody validated: Western Blot in mouse samples; Immunohistochemistry in rat samples and Immunofluorescence in human and rat samples. All other applications and species not yet tested.

Isotype

IgG

Clonality

Polyclonal

MW

Predicted: 46 kDa Observed: 95 kDa

Uniprot ID

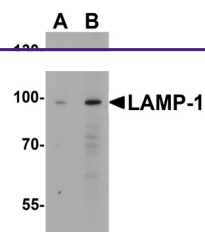
[P11279](#)

NCBI

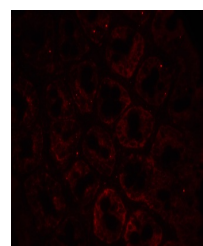
[NP_005552](#)

Dilution Range

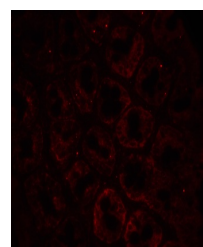
LAMP-1 antibody can be used for the detection of LAMP-1 by Western blot at 1 - 2 µg/mL. Antibody can also be used for immunohistochemistry starting at 2.5 µg/mL. For immunofluorescence start at 20 µg/mL. Antibody validated: Western Blot in mouse samples; Immunohistochemistry in rat samples and Immunofluorescence in human and rat samples. All



Western blot analysis of LAMP-1 in EL4 c...



Immunofluorescence of LAMP-1 in human CO...



Immunofluorescence of LAMP-1 in Human Co...