

Product Datasheet

LAG3 Antibody (orb1239548)

Description

LAG3 Antibody

Species/Host

Mouse

Reactivity

Human

Conjugation

Unconjugated

Tested

ELISA, FC, ICC, IF, IHC-P, WB

Applications

Immunogen

LAG-3 antibody was raised against the extracellular domain of human LAG-3

Target

LAG3

Preservatives

LAG-3 Antibody is supplied in PBS containing 0.02% sodium azide and 50% glycerol.

Form/Appearance

Liquid

Concentration

1 mg/mL

Storage

LAG-3 antibody can be stored at 4°C for three months and -20°C, stable for up to one year. As with all antibodies care should be taken to avoid repeated freeze thaw cycles. Antibodies should not be exposed to prolonged high temperatures.

Note

For research use only

Application notes

LAG-3 antibody can be used for ELISA starting at 0.25 µg/mL. For Western blot start at 0.25 µg/mL. For Immunocytochemistry start at 1 µg/mL. For Immunofluorescence start at 10 µg/mL. For Immunohistochemistry start at 5 µg/mL. For Flow Cytometry start at 1 µg/mL. Antibody validated: Western Blot in human samples; Immunohistochemistry in human samples; Immunocytochemistry in human samples; Immunofluorescence in human samples and Flow Cytometry in human samples. All other applications and species not yet tested.

Isotype

IgG1,k

Clonality

Monoclonal

MW

Predicted: 55 kDa Observed: 60, 70, 80 kDa

Uniprot ID

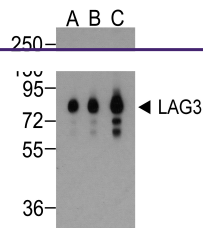
[P18627](#)

NCBI

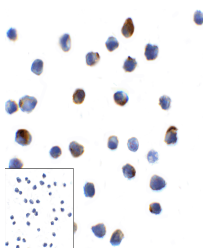
[NP_002277](#)

Dilution Range

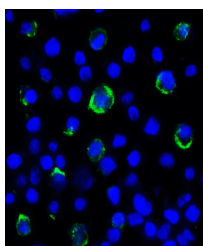
LAG-3 antibody can be used for ELISA starting at 0.25 µg/mL. For Western blot start at 0.25 µg/mL. For Immunocytochemistry start at 1 µg/mL. For



Western blot analysis of LAG-3 in over e...



Immunocytochemistry of LAG-3 in over exp...



Immunofluorescence of LAG-3 in over expr...