

Product Datasheet

KIF5A Antibody (orb1239543)

Description

KIF5A Antibody

Species/Host

Rabbit

Reactivity

Human, Mouse, Rat

Conjugation

Unconjugated

Tested

ELISA, ICC, IF, IHC, WB

Applications

Immunogen

KIF5 antibody was raised against a 20 amino acid synthetic peptide from near the carboxy terminus of human KIF5. The immunogen is located within amino acids 880 - 930 of KIF5.

Target

KIF5A

Preservatives

KIF5 Antibody is supplied in PBS containing 0.02% sodium azide.

Form/Appearance

Liquid

Concentration

1 mg/mL

Storage

KIF5 antibody can be stored at 4°C for three months and -20°C, stable for up to one year. As with all antibodies care should be taken to avoid repeated freeze thaw cycles. Antibodies should not be exposed to prolonged high temperatures.

Note

For research use only

Application notes

KIF5 antibody can be used for detection of KIF5 by Western blot at 0.5 - 1 µg/mL. Antibody can also be used for immunocytochemistry starting at 5 µg/mL and Immunohistochemistry starting at 5 µg/mL. For immunofluorescence start at 20 µg/mL. Antibody validated: Western Blot in human samples; Immunohistochemistry in mouse samples; Immunocytochemistry in human samples and Immunofluorescence in human and mouse samples. All other applications and species not yet tested.

Isotype

IgG

Clonality

Polyclonal

MW

Predicted: 114 kDa Observed: 116 kDa

Uniprot ID

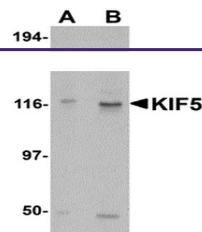
[Q12840](#)

NCBI

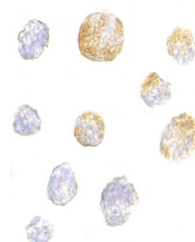
[Q12840](#)

Dilution Range

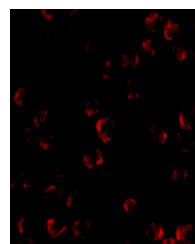
KIF5 antibody can be used for detection of KIF5 by Western blot at 0.5 - 1 µg/mL. Antibody can also be used for immunocytochemistry starting at 5 µg/mL.



Western blot analysis of KIF5 in K562 ce...



Immunocytochemistry of KIF5 in K562 cell...



Immunofluorescence of KIF5 in K562 cells...