

Product Datasheet

Lamp2 Antibody (orb1239542)

Description

Lamp2 Antibody

Species/Host

Rabbit

Reactivity

Human, Mouse

Conjugation

Unconjugated

Tested

ELISA, ICC, IHC-P, WB

Applications
Immunogen

LAMP-2 antibody was raised against a 17 amino acid synthetic peptide from near the carboxy terminus of human LAMP-2. The immunogen is located within the last 50 amino acids of LAMP-2.

Target

Lamp2

Preservatives

LAMP-2 Antibody is supplied in PBS containing 0.02% sodium azide.

Form/Appearance

Liquid

Concentration

1 mg/mL

Storage

LAMP-2 antibody can be stored at 4°C for three months and -20°C, stable for up to one year. As with all antibodies care should be taken to avoid repeated freeze thaw cycles. Antibodies should not be exposed to prolonged high temperatures.

Note

For research use only

Application notes

LAMP-2 antibody can be used for the detection of LAMP-2 by Western blot at 1 - 2 µg/mL. Antibody can also be used for immunocytochemistry starting at 10 µg/mL and immunohistochemistry starting at 5 µg/mL. Antibody validated: Western Blot in human samples; Immunohistochemistry in mouse samples and Immunocytochemistry in human samples. All other applications and species not yet tested.

Isotype

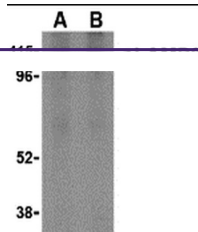
IgG

Clonality

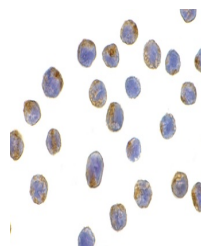
Polyclonal

Uniprot ID
P17047
NCBI
NP_054701
Dilution Range

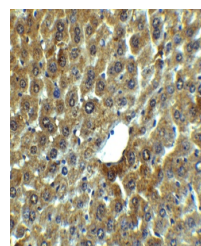
LAMP-2 antibody can be used for the detection of LAMP-2 by Western blot at 1 - 2 µg/mL. Antibody can also be used for immunocytochemistry starting at 10 µg/mL and immunohistochemistry starting at 5 µg/mL. Antibody validated: Western Blot in human samples; Immunohistochemistry in mouse samples



Western blot analysis of LAMP-2 in HepG2...



Immunocytochemistry of LAMP-2 in HepG2 C...



Immunohistochemistry of LAMP-2 in mouse ...