

## Product Datasheet

### CERS6 Antibody (orb1239533)

**Description**
**CERS6 Antibody**
**Species/Host**

Rabbit

**Reactivity**

Human, Mouse, Rat

**Conjugation**

Unconjugated

**Tested**

ELISA, IF, IHC-P, WB

**Applications**
**Immunogen**

LASS6 antibody was raised against a 13 amino acid synthetic peptide near the carboxy terminus of the human LASS6. The immunogen is located within the last 50 amino acids of LASS6.

**Target**

CERS6

**Preservatives**

LASS6 Antibody is supplied in PBS containing 0.02% sodium azide.

**Form/Appearance**

Liquid

**Concentration**

1 mg/mL

**Storage**

LASS6 antibody can be stored at 4°C for three months and -20°C, stable for up to one year. As with all antibodies care should be taken to avoid repeated freeze thaw cycles. Antibodies should not be exposed to prolonged high temperatures.

**Note**

For research use only

**Application notes**

LASS6 antibody can be used for detection of LASS6 by Western blot at 1 - 2 µg/mL. Antibody can also be used for immunohistochemistry starting at 2.5 µg/mL. For immunofluorescence start at 20 µg/mL. Antibody validated: Western Blot in rat samples; Immunohistochemistry in mouse samples and Immunofluorescence in mouse samples. All other applications and species not yet tested.

**Isotype**

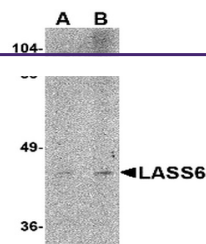
IgG

**Clonality**

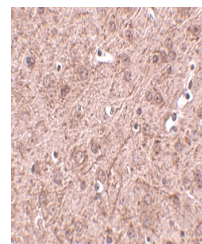
Polyclonal

**Uniprot ID**
**Q6ZMG9**
**NCBI**
**AAI09285**
**Dilution Range**

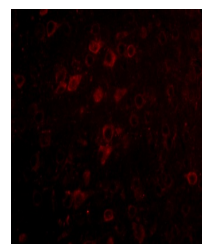
LASS6 antibody can be used for detection of LASS6 by Western blot at 1 - 2 µg/mL. Antibody can also be used for immunohistochemistry starting at 2.5 µg/mL. For immunofluorescence start at 20 µg/mL. Antibody validated: Western Blot in rat samples; Immunohistochemistry in mouse samples



Western blot analysis of LASS6 in rat br...



Immunohistochemistry of LASS6 in mouse b...



Immunofluorescence of LASS6 in Mouse Bra...