

Product Datasheet

LEMD3 Antibody (orb1239530)

Description
LEMD3 Antibody
Species/Host

Rabbit

Reactivity

Human, Mouse

Conjugation

Unconjugated

Tested

ELISA, IF, IHC-P, WB

Applications
Immunogen

LEMD3 antibody was raised against an 18 amino acid synthetic peptide near the carboxy terminus of human LEMD3. The immunogen is located within the last 50 amino acids of LEMD3.

Target

LEMD3

Preservatives

LEMD3 Antibody is supplied in PBS containing 0.02% sodium azide.

Form/Appearance

Liquid

Concentration

1 mg/mL

Storage

LEMD3 antibody can be stored at 4°C for three months and -20°C, stable for up to one year. As with all antibodies care should be taken to avoid repeated freeze thaw cycles. Antibodies should not be exposed to prolonged high temperatures.

Note

For research use only

Application notes

LEMD3 antibody can be used for detection of LEMD3 by Western blot at 1 µg/mL. Antibody can also be used for immunohistochemistry starting at 2.5 µg/mL. For immunofluorescence start at 5 µg/mL. Antibody validated: Western Blot in human samples; Immunohistochemistry in human samples and Immunofluorescence in human samples. All other applications and species not yet tested.

Isotype

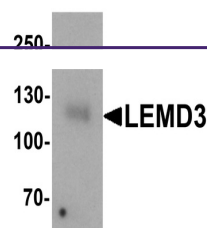
IgG

Clonality

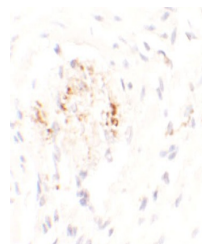
Polyclonal

Uniprot ID
Q9Y2U8
NCBI
NP_055134
Dilution Range

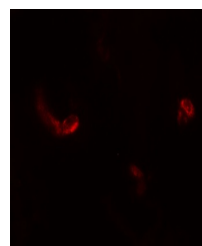
LEMD3 antibody can be used for detection of LEMD3 by Western blot at 1 µg/mL. Antibody can also be used for immunohistochemistry starting at 2.5 µg/mL. For immunofluorescence start at 5 µg/mL. Antibody validated: Western Blot in human samples; Immunohistochemistry in human samples



Western blot analysis of LEMD3 in human ...



Immunohistochemistry of LEMD3 in human C...



Immunofluorescence of LEMD3 in human col...