

## Product Datasheet

### LRRC8A Antibody (orb1239502)

## Description

## LRRC8A Antibody

### Species/Host

Rabbit

### Reactivity

Human, Mouse, Rat

### Conjugation

Unconjugated

### Tested

ELISA, IHC-P, WB

### Applications

### Immunogen

LRRC8A antibody was raised against a 15 amino acid peptide near the amino terminus of human LRRC8A. The immunogen is located within amino acids 60 - 110 of LRRC8A.

### Target

LRRC8A

### Preservatives

LRRC8A antibody is supplied in PBS containing 0.02% sodium azide.

### Form/Appearance

Liquid

### Concentration

1 mg/mL

### Storage

LRRC8A antibody can be stored at 4°C for three months and -20°C, stable for up to one year.

### Note

For research use only

### Application notes

LRRC8A antibody can be used for detection of LRRC8A by Western blot at 1 - 2 µg/ml. Antibody can also be used for immunohistochemistry starting at 2.5 µg/mL. Antibody validated: Western Blot in mouse samples and Immunohistochemistry in rat samples. All other applications and species not yet tested.

### Isotype

IgG

### Clonality

Polyclonal

### MW

Predicted: 89 kDa Observed: 95 kDa

### Uniprot ID

[Q8IWT6](#)

### NCBI

[NP\\_062540](#)

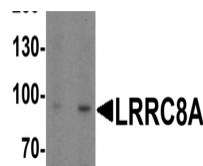
### Dilution Range

LRRC8A antibody can be used for detection of LRRC8A by Western blot at 1 - 2 µg/ml. Antibody can also be used for immunohistochemistry starting at 2.5 µg/mL. Antibody validated: Western Blot in mouse samples and Immunohistochemistry in rat samples. All other applications and species not yet tested.

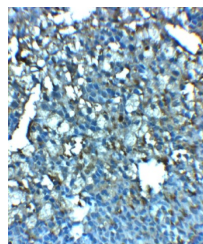
### Expiration Date

12 months from date of receipt.

## A B



Western blot analysis of LRRC8A in EL4 c...



Immunohistochemistry of LRRC8A in rat sp...