

Product Datasheet

LRRFIP2 Antibody (orb1239500)

Description

LRRFIP2 Antibody

Species/Host

Rabbit

Reactivity

Human, Mouse, Rat

Conjugation

Unconjugated

Tested

ELISA, IF, IHC-P, WB

Applications

Immunogen

LRRFIP2 antibody was raised against a 17 amino acid synthetic peptide near the carboxy terminus of human LRRFIP2. The immunogen is located within amino acids 620 - 670 of LRRFIP2.

Target

LRRFIP2

Preservatives

LRRFIP2 Antibody is supplied in PBS containing 0.02% sodium azide.

Form/Appearance

Liquid

Concentration

1 mg/mL

Storage

LRRFIP2 antibody can be stored at 4°C for three months and -20°C, stable for up to one year. As with all antibodies care should be taken to avoid repeated freeze thaw cycles. Antibodies should not be exposed to prolonged high temperatures.

Note

For research use only

Application notes

LRRFIP2 antibody can be used for detection of LRRFIP2 by Western blot at 0.5 and 1 µg/mL. Antibody can also be used for immunohistochemistry starting at 5 µg/mL. For immunofluorescence start at 20 µg/mL. Antibody validated: Western Blot in rat samples; Immunohistochemistry in human samples and Immunofluorescence in human samples. All other applications and species not yet tested.

Isotype

IgG

Clonality

Polyclonal

Uniprot ID

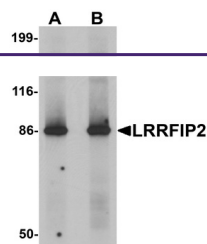
Q9Y608

NCBI

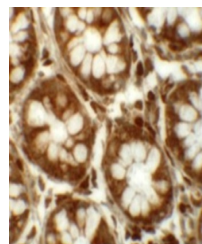
NP_006300

Dilution Range

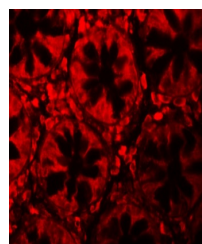
LRRFIP2 antibody can be used for detection of LRRFIP2 by Western blot at 0.5 and 1 µg/mL. Antibody can also be used for immunohistochemistry starting at 5 µg/mL. For immunofluorescence start at 20 µg/mL. Antibody



Western blot analysis of LRRFIP2 in rat ...



Immunohistochemistry of LRRFIP2 in human...



Immunofluorescence of LRRFIP2 in human C...