

Product Datasheet

LRRTM1 Antibody (orb1239499)

Description
LRRTM1 Antibody
Species/Host

Rabbit

Reactivity

Human, Mouse, Rat

Conjugation

Unconjugated

Tested

ELISA, IF, IHC-P, WB

Applications
Immunogen

LRRTM1 antibody was raised against a 17 amino acid synthetic peptide near the carboxy terminus of human LRRTM1. The immunogen is located within amino acids 450 - 500 of LRRTM1.

Target

LRRTM1

Preservatives

LRRTM1 Antibody is supplied in PBS containing 0.02% sodium azide.

Form/Appearance

Liquid

Concentration

1 mg/mL

Storage

LRRTM1 antibody can be stored at 4°C for three months and -20°C, stable for up to one year. As with all antibodies care should be taken to avoid repeated freeze thaw cycles. Antibodies should not be exposed to prolonged high temperatures.

Note

For research use only

Application notes

LRRTM1 antibody can be used for detection of LRRTM1 by Western blot at 1 µg/mL. Antibody can also be used for immunohistochemistry starting at 5 µg/mL. For immunofluorescence start at 20 µg/mL. Antibody validated: Western Blot in mouse samples; Immunohistochemistry in human samples and Immunofluorescence in human samples. All other applications and species not yet tested.

Isotype

IgG

Clonality

Polyclonal

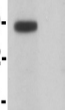
Uniprot ID
Q86UE6
NCBI
AAH45113
Dilution Range

LRRTM1 antibody can be used for detection of LRRTM1 by Western blot at 1 µg/mL. Antibody can also be used for immunohistochemistry starting at 5 µg/mL. For immunofluorescence start at 20 µg/mL. Antibody validated: Western Blot in mouse samples; Immunohistochemistry in human samples

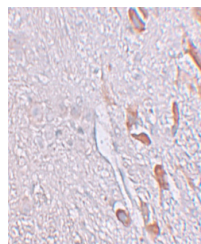
A B

70-
62-
51-

◀LRRTM1

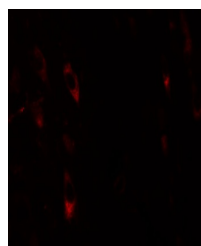


Western blot analysis of LRRTM1 in mouse...



Immunohistochemistry of LRRTM1 in human

...



Immunofluorescence of LRRTM1 in human
br...