

Product Datasheet

LRRTM3 Antibody (orb1239497)

Description
LRRTM3 Antibody
Species/Host

Rabbit

Reactivity

Human, Mouse, Rat

Conjugation

Unconjugated

Tested

ELISA, IF, IHC-P, WB

Applications
Immunogen

LRRTM3 antibody was raised against a 18 amino acid synthetic peptide near the carboxy terminus of human LRRTM3. The immunogen is located within the last 50 amino acids of LRRTM3.

Target

LRRTM3

Preservatives

LRRTM3 Antibody is supplied in PBS containing 0.02% sodium azide.

Form/Appearance

Liquid

Concentration

1 mg/mL

Storage

LRRTM3 antibody can be stored at 4°C for three months and -20°C, stable for up to one year. As with all antibodies care should be taken to avoid repeated freeze thaw cycles. Antibodies should not be exposed to prolonged high temperatures.

Note

For research use only

Application notes

LRRTM3 antibody can be used for detection of LRRTM3 by Western blot at 0.5 µg/mL. Antibody can also be used for immunohistochemistry starting at 2.5 µg/mL. For immunofluorescence start at 20 µg/mL. Antibody validated: Western Blot in mouse samples; Immunohistochemistry in human samples and Immunofluorescence in human samples. All other applications and species not yet tested.

Isotype

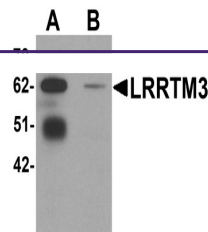
IgG

Clonality

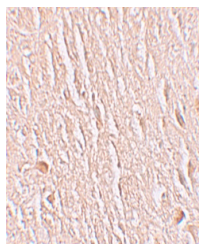
Polyclonal

Uniprot ID
Q86VH5
NCBI
NP_821079
Dilution Range

LRRTM3 antibody can be used for detection of LRRTM3 by Western blot at 0.5 µg/mL. Antibody can also be used for immunohistochemistry starting at 2.5 µg/mL. For immunofluorescence start at 20 µg/mL. Antibody validated: Western Blot in mouse samples; Immunohistochemistry in human samples

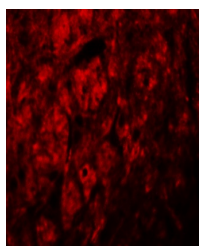


Western blot analysis of LRRTM3 in mouse...



Immunohistochemistry of LRRTM3 in human

...



Immunofluorescence of LRRTM3 in human br...