

Product Datasheet

LRRTM4 Antibody (orb1239496)

Description

LRRTM4 Antibody

Species/Host

Rabbit

Reactivity

Human

Conjugation

Unconjugated

Tested

ELISA, IF, IHC-P, WB

Applications

Immunogen

LRRTM4 antibody was raised against a 16 amino acid synthetic peptide near the center of human LRRTM4. The immunogen is located within amino acids 350 - 400 of LRRTM4.

Target

LRRTM4

Preservatives

LRRTM4 Antibody is supplied in PBS containing 0.02% sodium azide.

Form/Appearance

Liquid

Concentration

1 mg/mL

Storage

LRRTM4 antibody can be stored at 4°C for three months and -20°C, stable for up to one year. As with all antibodies care should be taken to avoid repeated freeze thaw cycles. Antibodies should not be exposed to prolonged high temperatures.

Note

For research use only

Application notes

LRRTM4 antibody can be used for detection of LRRTM4 by Western blot at 1 µg/mL. Antibody can also be used for immunohistochemistry starting at 2.5 µg/mL. For immunofluorescence start at 20 µg/mL. Antibody validated: Western Blot in human samples; Immunohistochemistry in human samples and Immunofluorescence in human samples. All other applications and species not yet tested.

Isotype

IgG

Clonality

Polyclonal

Uniprot ID

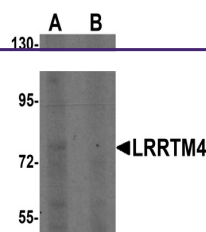
Q86VH4

NCBI

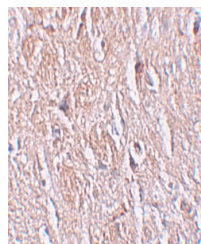
NP_001128217

Dilution Range

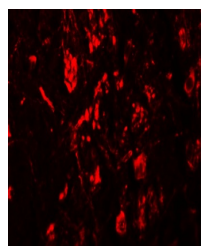
LRRTM4 antibody can be used for detection of LRRTM4 by Western blot at 1 µg/mL. Antibody can also be used for immunohistochemistry starting at 2.5 µg/mL. For immunofluorescence start at 20 µg/mL. Antibody validated: Western Blot in human samples; Immunohistochemistry in human samples



Western blot analysis of LRRTM4 in HeLa ...



Immunohistochemistry of LRRTM4 in human ...



Immunofluorescence of LRRTM4 in human br...