

Product Datasheet

MAP1LC3B Antibody (orb1239474)

Description

MAP1LC3B Antibody

Species/Host

Rabbit

Reactivity

Human, Mouse, Rat

Conjugation

Unconjugated

Tested

ELISA, IF, IHC-P, WB

Applications

Immunogen

MAP1LC3B antibody was raised against an 18 amino acid peptide near the amino terminus of human MAP1LC3B. The immunogen is located within the first 50 amino acids of MAP1LC3B.

Target

MAP1LC3B

Preservatives

MAP1LC3B antibody is supplied in PBS containing 0.02% sodium azide.

Form/Appearance

Liquid

Concentration

1 mg/mL

Storage

MAP1LC3B antibody can be stored at 4°C for three months and -20°C, stable for up to one year.

Note

For research use only

Application notes

MAP1LC3B antibody can be used for detection of MAP1LC3B by Western blot at 1 - 2 µg/ml. Antibody can also be used for Immunohistochemistry starting at 5 µg/mL. For immunofluorescence start at 20 µg/mL. Antibody validated: Western Blot in human samples; Immunohistochemistry in human samples and Immunofluorescence in human samples. All other applications and species not yet tested.

Isotype

IgG

Clonality

Polyclonal

MW

Predicted: 14 kDa Observed: 14 kDa

Uniprot ID

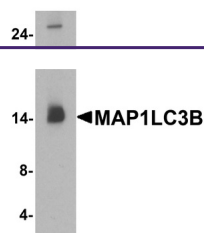
[Q9GZQ8](#)

NCBI

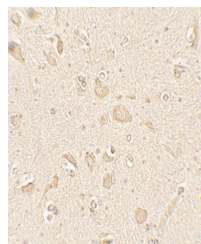
[NP_073729](#)

Dilution Range

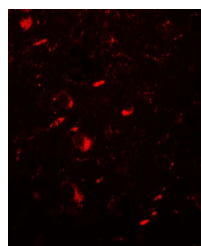
MAP1LC3B antibody can be used for detection of MAP1LC3B by Western blot at 1 - 2 µg/ml. Antibody can also be used for Immunohistochemistry starting at 5 µg/mL. For immunofluorescence start at 20 µg/mL. Antibody validated: Western Blot in human samples; Immunohistochemistry in human samples and Immunofluorescence in human samples. All other applications and species not yet tested.



Western blot analysis of MAP1LC3B in hum...



Immunohistochemistry of MAP1LC3B in huma...



Immunofluorescence of MAP1LC3B in human ...