

Product Datasheet

MARCH8 Antibody (orb1239470)

Description

MARCH8 Antibody

Species/Host

Rabbit

Reactivity

Human, Mouse, Rat

Conjugation

Unconjugated

Tested

ELISA, ICC, WB

Applications

Immunogen

MARCH8 antibody was raised against a 17 amino acid synthetic peptide from near the carboxy terminus of human MARCH8. The immunogen is located within the last 50 amino acids of MARCH8.

Target

MARCH8

Preservatives

MARCH8 Antibody is supplied in PBS containing 0.02% sodium azide.

Form/Appearance

Liquid

Concentration

1 mg/mL

Storage

MARCH8 antibody can be stored at 4°C for three months and -20°C, stable for up to one year. As with all antibodies care should be taken to avoid repeated freeze thaw cycles. Antibodies should not be exposed to prolonged high temperatures.

Note

For research use only

Application notes

MARCH8 antibody can be used for detection of MARCH8 by Western blot at 0.5 - 1 µg/mL. Antibody can also be used for immunocytochemistry starting at 2.5 µg/mL. Antibody validated: Western Blot in human samples and Immunocytochemistry in human samples. All other applications and species not yet tested.

Isotype

IgG

Clonality

Polyclonal

Uniprot ID

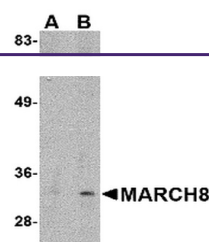
[Q5T0T0](#)

NCBI

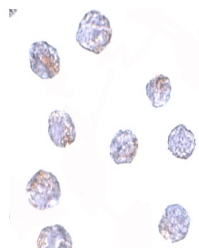
[NP_659458](#)

Dilution Range

MARCH8 antibody can be used for detection of MARCH8 by Western blot at 0.5 - 1 µg/mL. Antibody can also be used for immunocytochemistry starting at 2.5 µg/mL. Antibody validated: Western Blot in human samples and Immunocytochemistry in human samples. All other applications and species not yet tested.



Western blot analysis of MARCH8 in HeLa ...



Immunocytochemistry of MARCH8 in HeLa ce...