

Product Datasheet

MATN3 Antibody (orb1239467)

Description

MATN3 Antibody

Species/Host

Rabbit

Reactivity

Human, Mouse, Rat

Conjugation

Unconjugated

Tested

ELISA, ICC, IF, WB

Applications

Immunogen

MATN3 antibody was raised against a 13 amino acid synthetic peptide from near the center of human MATN3. The immunogen is located within amino acids 180 - 230 of MATN3.

Target

MATN3

Preservatives

MATN3 Antibody is supplied in PBS containing 0.02% sodium azide.

Form/Appearance

Liquid

Concentration

1 mg/mL

Storage

MATN3 antibody can be stored at 4°C for three months and -20°C, stable for up to one year. As with all antibodies care should be taken to avoid repeated freeze thaw cycles. Antibodies should not be exposed to prolonged high temperatures.

Note

For research use only

Application notes

MATN3 antibody can be used for detection of MATN3 by Western blot at 1 - 2 µg/mL. Antibody can also be used for immunocytochemistry starting at 2.5 µg/mL. For immunofluorescence start at 20 µg/mL. Antibody validated: Western Blot in rat samples; Immunocytochemistry in mouse samples and Immunofluorescence in mouse samples. All other applications and species not yet tested.

Isotype

IgG

Clonality

Polyclonal

Uniprot ID

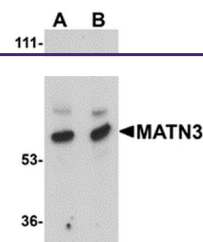
[O15232](#)

NCBI

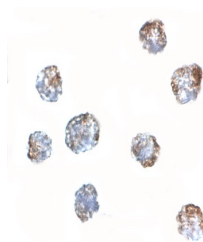
[AAI39908](#)

Dilution Range

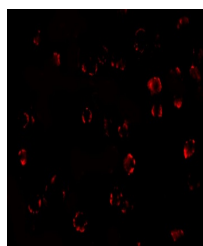
MATN3 antibody can be used for detection of MATN3 by Western blot at 1 - 2 µg/mL. Antibody can also be used for immunocytochemistry starting at 2.5 µg/mL. For immunofluorescence start at 20 µg/mL. Antibody validated: Western Blot in rat samples; Immunocytochemistry in mouse samples and



Western blot analysis of MATN3 in rat th...



Immunocytochemistry of MATN3 in 3T3 cell...



Immunofluorescence of MATN3 in 3T3 cells...