

Product Datasheet

MAP2K1 Antibody (orb1239447)

Description

MAP2K1 Antibody

Species/Host

Rabbit

Reactivity

Human, Mouse, Rat

Conjugation

Unconjugated

Tested Applications

ELISA, IF, IHC-P, WB

Immunogen

MEK1/2 antibody was raised against a 15 amino acid peptide near the center of human MEK1. The immunogen is located within amino acids 240 - 290 of MEK1/2.

Target

MAP2K1

Preservatives

MEK1/2 antibody is supplied in PBS containing 0.02% sodium azide.

Form/Appearance

Liquid

Concentration

1 mg/mL

Storage

MEK1/2 antibody can be stored at 4°C for three months and -20°C, stable for up to one year.

Note

For research use only

Application notes

MEK1/2 antibody can be used for detection of MEK1/2 by Western blot at 1 - 2 µg/ml. Antibody can also be used for immunohistochemistry starting at 5 µg/mL. For immunofluorescence start at 20 µg/mL. Antibody validated: Western Blot in human samples; Immunohistochemistry in mouse samples and Immunofluorescence in mouse samples. All other applications and species not yet tested.

Isotype

IgG

Clonality

Polyclonal

MW

Predicted: 43 kDa Observed: 44 kDa

Uniprot ID

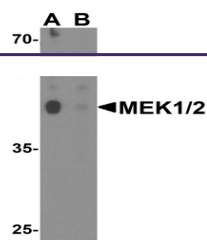
[Q0VD16](#)

NCBI

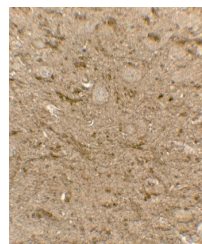
[NP_002746](#)

Dilution Range

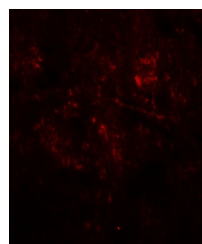
MEK1/2 antibody can be used for detection of MEK1/2 by Western blot at 1 - 2 µg/ml. Antibody can also be used for immunohistochemistry starting at 5 µg/mL. For immunofluorescence start at 20 µg/mL. Antibody validated: Western Blot in human samples; Immunohistochemistry in mouse samples and Immunofluorescence in mouse samples. All other applications and species not yet tested.



Western blot analysis of MEK1/2 in human...



Immunohistochemistry of MEK1/2 in mouse ...



Immunofluorescence of MEK1/2 in mouse br...