

## Product Datasheet

### GRIK1 Antibody (orb1239425)

## Description

## GRIK1 Antibody

### Species/Host

Rabbit

### Reactivity

Human, Mouse

### Conjugation

Unconjugated

### Tested

ELISA, IF, IHC-P, WB

### Applications

### Immunogen

Grik1 antibody was raised against a 15 amino acid synthetic peptide near the carboxy terminus of the human Grik1. The immunogen is located within the last 50 amino acids of Grik1.

### Target

GRIK1

### Preservatives

Grik1 Antibody is supplied in PBS containing 0.02% sodium azide.

### Form/Appearance

Liquid

### Concentration

1 mg/mL

### Storage

Grik1 antibody can be stored at 4°C for three months and -20°C, stable for up to one year. As with all antibodies care should be taken to avoid repeated freeze thaw cycles. Antibodies should not be exposed to prolonged high temperatures.

### Note

For research use only

### Application notes

Grik1 antibody can be used for detection of Grik1 by Western blot at 0.5 - 2 µg/mL. Antibody can also be used for immunohistochemistry starting at 2.5 µg/mL. For immunofluorescence start at 20 µg/mL. Antibody validated: Western Blot in mouse samples; Immunohistochemistry in human and mouse samples and Immunofluorescence in human and mouse samples. All other applications and species not yet tested.

### Isotype

IgG

### Clonality

Polyclonal

### Uniprot ID

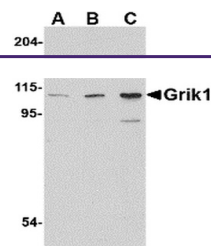
**P39086**

### NCBI

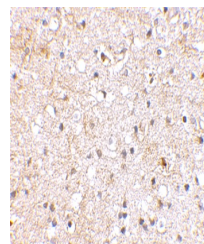
**P39086**

### Dilution Range

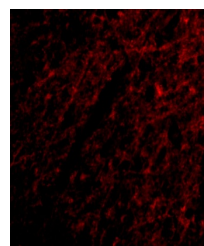
Grik1 antibody can be used for detection of Grik1 by Western blot at 0.5 - 2 µg/mL. Antibody can also be used for immunohistochemistry starting at 2.5 µg/mL. For immunofluorescence start at 20 µg/mL. Antibody validated: Western Blot in mouse samples;



Western blot analysis of Grik1 in P815 c...



Immunohistochemical staining of human br...



Immunofluorescence of Grik1 in Human Bra...