

Product Datasheet

NLRP10 Antibody (orb1239407)

Description

NLRP10 Antibody

Species/Host

Rabbit

Reactivity

Human

Conjugation

Unconjugated

Tested

ELISA, IF, IHC-P, WB

Applications

Immunogen

NALP10 antibody was raised against a 14 amino acid synthetic peptide near the amino terminus of human NALP10. The immunogen is located within the first 50 amino acids of NALP10.

Target

NLRP10

Preservatives

NALP10 Antibody is supplied in PBS containing 0.02% sodium azide.

Form/Appearance

Liquid

Concentration

1 mg/mL

Storage

NALP10 antibody can be stored at 4°C for three months and -20°C, stable for up to one year. As with all antibodies care should be taken to avoid repeated freeze thaw cycles. Antibodies should not be exposed to prolonged high temperatures.

Note

For research use only

Application notes

NALP10 antibody can be used for detection of NALP10 by Western blot at 1 µg/mL. Antibody can also be used for immunohistochemistry starting at 10 µg/mL. For immunofluorescence start at 20 µg/mL. Antibody validated: Western Blot in human samples; Immunohistochemistry in human samples and Immunofluorescence in human samples. All other applications and species not yet tested.

Isotype

IgG

Clonality

Polyclonal

Uniprot ID

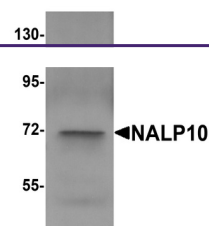
[Q86W26](#)

NCBI

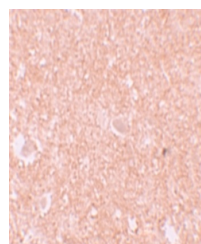
[NP_789791](#)

Dilution Range

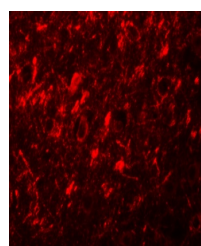
NALP10 antibody can be used for detection of NALP10 by Western blot at 1 µg/mL. Antibody can also be used for immunohistochemistry starting at 10 µg/mL. For immunofluorescence start at 20 µg/mL. Antibody validated: Western Blot in human samples; Immunohistochemistry in human samples



Western blot analysis of NALP10 in human...



Immunohistochemistry of NALP10 in human ...



Immunofluorescence of NALP10 in human br...