

Product Datasheet

NLRP7 Antibody (orb1239399)

Description

NLRP7 Antibody

Species/Host

Rabbit

Reactivity

Human

Conjugation

Unconjugated

Tested

ELISA, IF, IHC-P, WB

Applications

Immunogen

NALP7 antibody was raised against an 18 amino acid synthetic peptide near the amino terminus of human NALP7. The immunogen is located within amino acids 90 - 140 of NALP7.

Target

NLRP7

Preservatives

NALP7 Antibody is supplied in PBS containing 0.02% sodium azide.

Form/Appearance

Liquid

Concentration

1 mg/mL

Storage

NALP7 antibody can be stored at 4°C for three months and -20°C, stable for up to one year. As with all antibodies care should be taken to avoid repeated freeze thaw cycles. Antibodies should not be exposed to prolonged high temperatures.

Note

For research use only

Application notes

NALP7 antibody can be used for detection of NALP7 by Western blot at 1 µg/mL. Antibody can also be used for immunohistochemistry starting at 10 µg/mL. For immunofluorescence start at 20 µg/mL. Antibody validated: Western Blot in human samples; Immunohistochemistry in human samples and Immunofluorescence in human samples. All other applications and species not yet tested.

Isotype

IgG

Clonality

Polyclonal

Uniprot ID

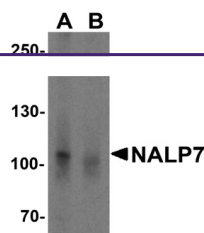
[Q8WX94](#)

NCBI

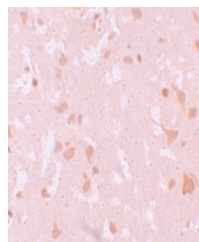
[NP_631915](#)

Dilution Range

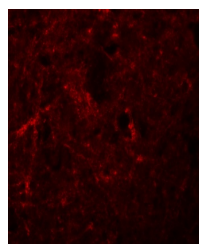
NALP7 antibody can be used for detection of NALP7 by Western blot at 1 µg/mL. Antibody can also be used for immunohistochemistry starting at 10 µg/mL. For immunofluorescence start at 20 µg/mL. Antibody validated: Western Blot in human samples; Immunohistochemistry in human samples and



Western blot analysis of NALP7 in K562 c...



Immunohistochemistry of NALP7 in human b...



Immunofluorescence of NALP7 in human bra...