

Product Datasheet

NANOS1 Antibody (orb1239396)

Description

NANOS1 Antibody

Species/Host

Rabbit

Reactivity

Human

Conjugation

Unconjugated

Tested

ELISA, IF, IHC-P, WB

Applications

Immunogen

Nanos1 antibody was raised against a 17 amino acid synthetic peptide from near the amino terminus of human Nanos1. The immunogen is located within the first 50 amino acids of Nanos1.

Target

NANOS1

Preservatives

Nanos1 Antibody is supplied in PBS containing 0.02% sodium azide.

Form/Appearance

Liquid

Concentration

1 mg/mL

Storage

Nanos1 antibody can be stored at 4°C for three months and -20°C, stable for up to one year. As with all antibodies care should be taken to avoid repeated freeze thaw cycles. Antibodies should not be exposed to prolonged high temperatures.

Note

For research use only

Application notes

Nanos1 antibody can be used for detection of Nanos1 by Western blot at 1 µg/mL. Antibody can also be used for immunohistochemistry starting at 2.5 µg/mL. For immunofluorescence start at 20 µg/mL. Antibody validated: Western Blot in human samples; Immunohistochemistry in human samples and Immunofluorescence in human samples. All other applications and species not yet tested.

Isotype

IgG

Clonality

Polyclonal

Uniprot ID

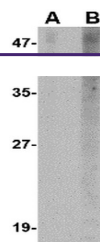
[Q8WY41](#)

NCBI

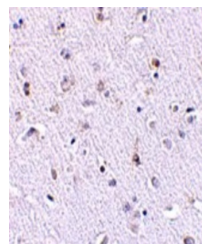
[Q8WY41](#)

Dilution Range

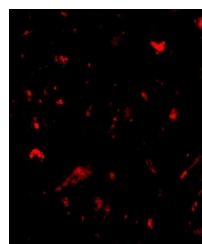
Nanos1 antibody can be used for detection of Nanos1 by Western blot at 1 µg/mL. Antibody can also be used for immunohistochemistry starting at 2.5 µg/mL. For immunofluorescence start at 20 µg/mL. Antibody validated: Western Blot in human samples; Immunohistochemistry in human samples



Western blot analysis of Nanos1 in SK-N-...



Immunohistochemistry of Nanos1 in human ...



Immunofluorescence of nanos1 in human br...