

Product Datasheet

NAP1L5 Antibody (orb1239393)

Description

NAP1L5 Antibody

Species/Host

Rabbit

Reactivity

Human, Mouse, Rat

Conjugation

Unconjugated

Tested

ELISA, IF, IHC-P, WB

Applications

Immunogen

NAP1L5 antibody was raised against an 18 amino acid peptide near the center of human NAP1L5. The immunogen is located within amino acids 40 - 90 of NAP1L5.

Target

NAP1L5

Preservatives

NAP1L5 antibody is supplied in PBS containing 0.02% sodium azide.

Form/Appearance

Liquid

Concentration

1 mg/mL

Storage

NAP1L5 antibody can be stored at 4°C for three months and -20°C, stable for up to one year.

Note

For research use only

Application notes

NAP1L5 antibody can be used for detection of NAP1L5 by Western blot at 1 - 2 µg/mL. Antibody can also be used for immunohistochemistry starting at 5 µg/mL. For immunofluorescence start at 20 µg/mL. Antibody validated: Western Blot in mouse samples; Immunohistochemistry in mouse samples and Immunofluorescence in mouse samples. All other applications and species not yet tested.

Isotype

IgG

Clonality

Polyclonal

MW

Predicted: 20 kDa (17kDa in mouse) Observed: 15 kDa

Uniprot ID

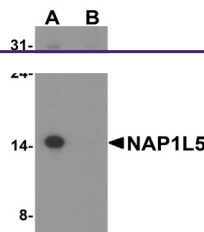
[Q96NT1](#)

NCBI

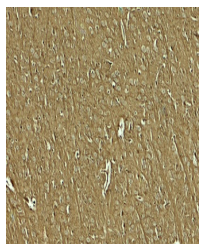
[NP_715638](#)

Dilution Range

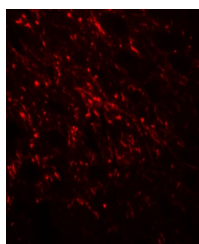
NAP1L5 antibody can be used for detection of NAP1L5 by Western blot at 1 - 2 µg/mL. Antibody can also be used for immunohistochemistry starting at 5 µg/mL. For immunofluorescence start at 20 µg/mL. Antibody validated: Western Blot in mouse samples; Immunohistochemistry in mouse samples and Immunofluorescence in mouse samples. All other applications and species not yet tested.



Western blot analysis of NAP1L5 in EL4 c...



Immunohistochemistry of NAP1L5 in mouse ...



Immunofluorescence of NAP1L5 in mouse br...