

## Product Datasheet

### NAA40 Antibody (orb1239392)

## Description

NAA40 Antibody

### Species/Host

Rabbit

### Reactivity

Human, Mouse

### Conjugation

Unconjugated

### Tested

ELISA, IF, IHC-P, WB

### Applications

### Immunogen

NAT11 antibody was raised against a 15 amino acid synthetic peptide near the carboxy terminus of human NAT11. The immunogen is located within the last 50 amino acids of NAT11.

### Target

NAA40

### Preservatives

NAT11 Antibody is supplied in PBS containing 0.02% sodium azide.

### Form/Appearance

Liquid

### Concentration

1 mg/mL

### Storage

NAT11 antibody can be stored at 4°C for three months and -20°C, stable for up to one year. As with all antibodies care should be taken to avoid repeated freeze thaw cycles. Antibodies should not be exposed to prolonged high temperatures.

### Note

For research use only

### Application notes

NAT11 antibody can be used for detection of NAT11 by Western blot at 1 - 2 µg/mL. Antibody can also be used for immunohistochemistry starting at 5 µg/mL. For immunofluorescence start at 20 µg/mL. Antibody validated: Western Blot in human samples; Immunohistochemistry in mouse samples and Immunofluorescence in mouse samples. All other applications and species not yet tested.

### Isotype

IgG

### Clonality

Polyclonal

### Uniprot ID

[Q86UY6](#)

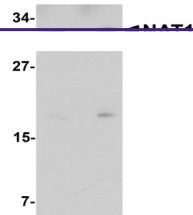
### NCBI

[NP\\_079047](#)

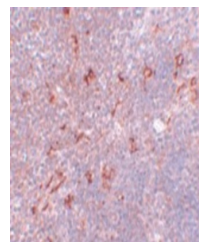
### Dilution Range

NAT11 antibody can be used for detection of NAT11 by Western blot at 1 - 2 µg/mL. Antibody can also be used for immunohistochemistry starting at 5 µg/mL. For immunofluorescence start at 20 µg/mL. Antibody validated: Western Blot in human samples; Immunohistochemistry in mouse samples and

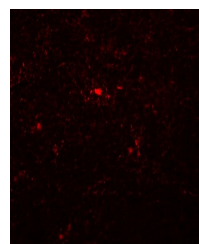
**A B**



Western blot analysis of NAT11 in human ...



Immunohistochemistry of NAT11 in mouse t...



Immunofluorescence of NAT11 in mouse thy...