

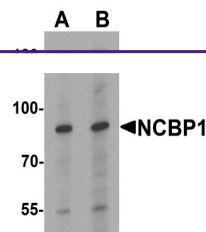
## Product Datasheet

### NCBP1 Antibody (orb1239391)

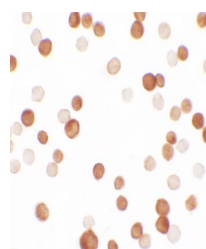
## Description

## NCBP1 Antibody

<b>Species/Host</b>	Rabbit
<b>Reactivity</b>	Human, Mouse, Rat
<b>Conjugation</b>	Unconjugated
<b>Tested Applications</b>	ELISA, ICC, WB
<b>Immunogen</b>	NCBP1 antibody was raised against a 17 amino acid peptide near the center of human NCBP1. The immunogen is located within amino acids 420 - 470 of NCBP1.
<b>Target</b>	NCBP1
<b>Preservatives</b>	NCBP1 Antibody is supplied in PBS containing 0.02% sodium azide.
<b>Form/Appearance</b>	Liquid
<b>Concentration</b>	1 mg/mL
<b>Storage</b>	NCBP1 antibody can be stored at 4°C for three months and -20°C, stable for up to one year.
<b>Note</b>	For research use only
<b>Application notes</b>	NCBP1 antibody can be used for detection of NCBP1 by Western blot at 1 - 2 µg/mL. Antibody validated: Western Blot in human samples and Immunocytochemistry in human samples. All other applications and species not yet tested.
<b>Isotype</b>	IgG
<b>Clonality</b>	Polyclonal
<b>MW</b>	Predicted: 87 kDa Observed: 87 kDa
<b>Uniprot ID</b>	<a href="#">Q09161</a>
<b>NCBI</b>	<a href="#">NP_002477</a>
<b>Dilution Range</b>	NCBP1 antibody can be used for detection of NCBP1 by Western blot at 1 - 2 µg/mL. Antibody validated: Western Blot in human samples and Immunocytochemistry in human samples. All other applications and species not yet tested.
<b>Expiration Date</b>	12 months from date of receipt.



Western blot analysis of NCBP1 in HeLa cells.



Immunocytochemistry of NCBP1 in HeLa cells.