

## Product Datasheet

### NDFIP1 Antibody (orb1239389)

**Description**

NDFIP1 Antibody

**Species/Host**

Rabbit

**Reactivity**

Human, Mouse

**Conjugation**

Unconjugated

**Tested**

ELISA, IF, IHC-P, WB

**Applications**

**Immunogen**

NDFIP1 antibody was raised against a 19 amino acid synthetic peptide near the amino terminus of human NDFIP1. The immunogen is located within the first 50 amino acids of NDFIP1.

**Target**

NDFIP1

**Preservatives**

NDFIP1 Antibody is supplied in PBS containing 0.02% sodium azide.

**Form/Appearance**

Liquid

**Concentration**

1 mg/mL

**Storage**

NDFIP1 antibody can be stored at 4°C for three months and -20°C, stable for up to one year. As with all antibodies care should be taken to avoid repeated freeze thaw cycles. Antibodies should not be exposed to prolonged high temperatures.

**Note**

For research use only

**Application notes**

NDFIP1 antibody can be used for detection of NDFIP1 by Western blot at 0.5 - 1 µg/mL. Antibody can also be used for immunohistochemistry starting at 5 µg/mL. For immunofluorescence start at 20 µg/mL. Antibody validated: Western Blot in human samples; Immunohistochemistry in human samples and Immunofluorescence in human samples. All other applications and species not yet tested.

**Isotype**

IgG

**Clonality**

Polyclonal

**MW**

24 kDa

**Uniprot ID**

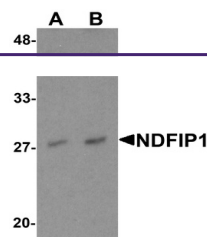
**Q9BT67**

**NCBI**

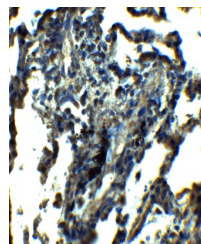
**NP\_085048**

**Dilution Range**

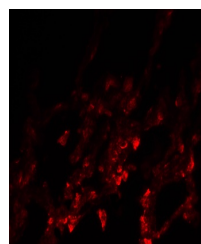
NDFIP1 antibody can be used for detection of NDFIP1 by Western blot at 0.5 - 1 µg/mL. Antibody can also be used for immunohistochemistry starting at 5 µg/mL. For immunofluorescence start at 20 µg/mL. Antibody validated: Western Blot in human



Western blot analysis of NDFIP1 in PC-3 ...



Immunohistochemistry of NDFIP1 in human ...



Immunofluorescence of NDFIP1 in human lu...